

## Tables

## Radar



Table with metal frame, central tie rods, thin top in different sizes. Radar is the harmony of tension. It intercepts those who seek an agreement between balance and movement.



## TABLE WITH TIE RODS

Radar is a table with central tie rods attached to the metal base to support its structure, a nod to the lattice structures of engineering designs, grafted onto an homage to the famous medieval "fratino table." Used in convents, it had a thick, narrow and long top supported by legs placed at the ends, connected by a longitudinal crossbar.



## THIN TOP

Radar's slim top is either fixed and rectangular, so as to create a table with an industrial flavor, or with a fixed top that is more oval to aim for a more traditional and elegant style ensemble. In the rectangular veneer version, the perimeter edge can be chosen straight or tilted at 30°.



## BALANCE OF STYLES

The rigorousness of the Radar table goes well with other regular, linear forms, such as the Glass Up storage units for the living room or the Slim Up sideboard and its distinctive ornamental play of horizontal and vertical grooves.



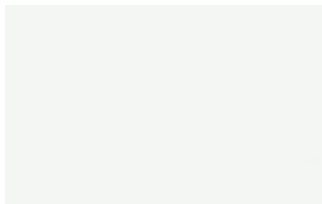
# FINISHES

The Radar table offers a wide variety of finishes to choose from to customize it to your exact needs. Check them out now.

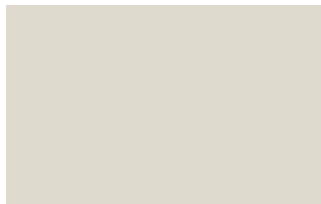
## Lacquers

### MATT LACQUERS

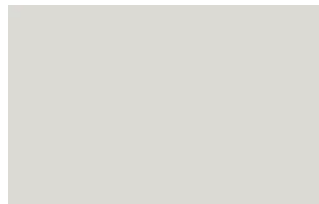
#### Matt lacquers



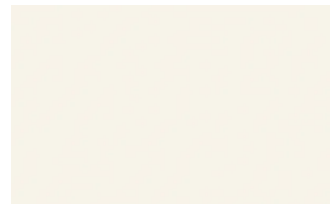
Bianco



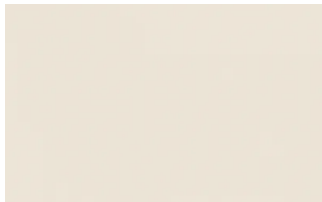
Ghiaccio



Sabbia



Panna



Crema



Grigio seta



Grigio perla



Light grey



Fior di loto



Giallo senape



Tortora



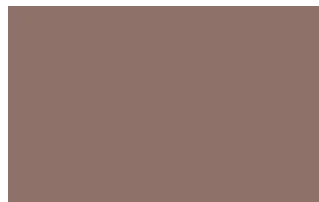
Canapa



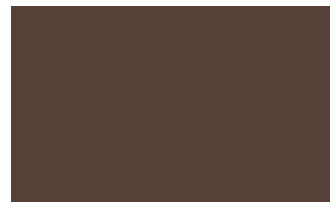
Corda



Dark grey



Terracotta



Moka



Rosso bordeaux



Rosso



Rosa cipria



Bruciato



Carta da zucchero



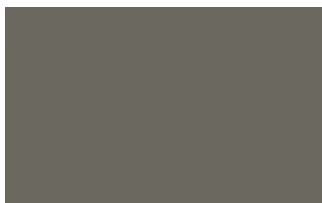
Grigio blu



Verde pallido



Verde malva



Grigio aston



Celeste



Turchese



Grigio Garda



Blu cobalto



Oceano



Grigio antracite

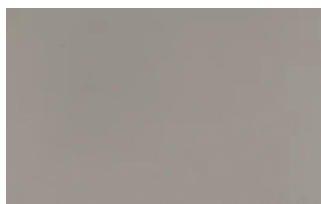


Nero

## Metallic matt lacquers



Titanio



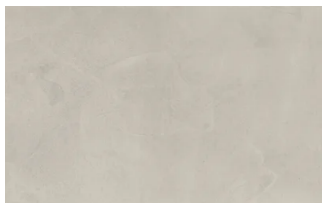
Nichel



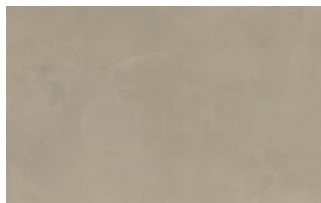
Piombo

## UP SURFACES

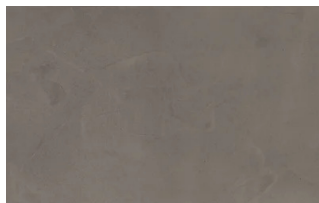
### Concrete effect lacquers



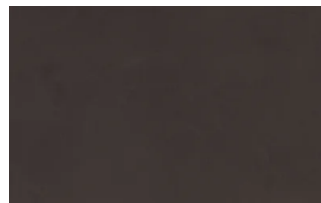
Perla



Argilla

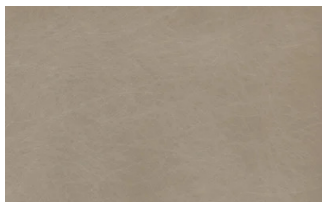


Grafite



Lava

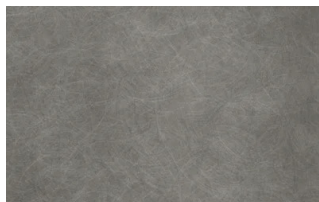
### Metal effect lacquers



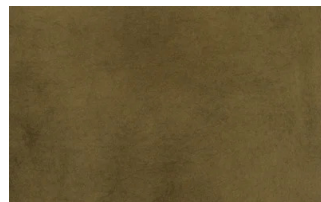
Nichel



Piombo

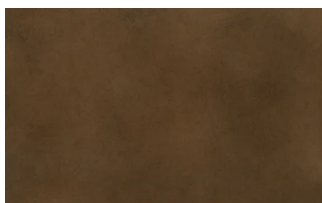


Titanio



Ossido ottone



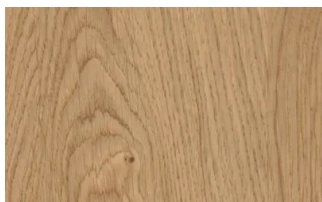


Ossido bronzo

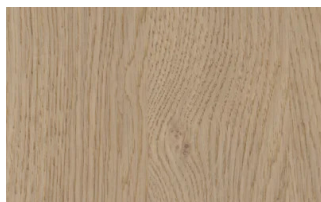
## Wood

### WOODS 1

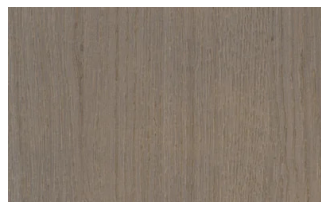
#### Woods 1



Natural oak



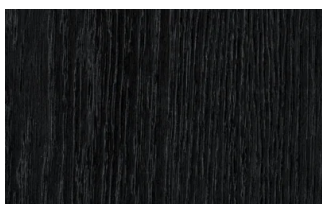
Visone oak



Cenere oak



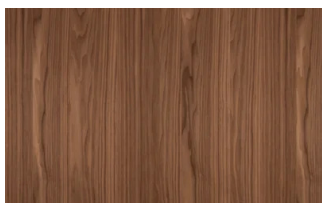
Castoro oak



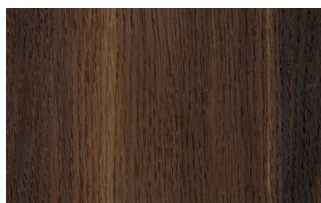
Carbone oak

### WOODS 2

#### Woods 2



Canaletto walnut



Heat-treated oak

## Stoneware

### STONEWARE

#### Matt stoneware



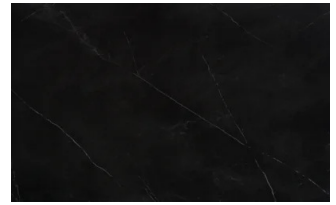
Azalai nero



Jasper moka



Storm grigio



Storm nero

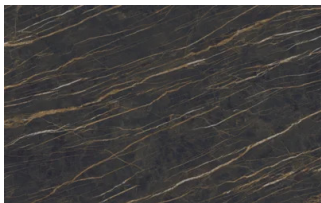


Senda grigio

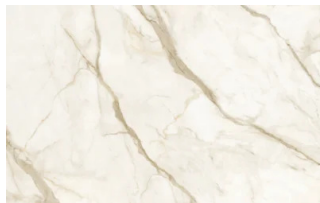


Pacific bianco

## Glossy stoneware



Noir desir



Calacatta oro

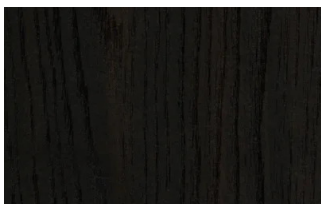


Breche capraia

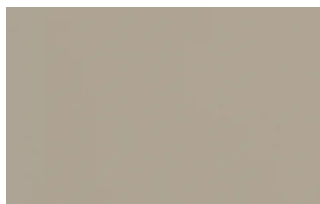
## Textured finishes

### TEXTURED FINISHES

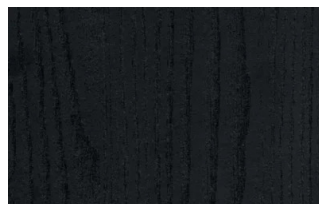
#### Textured finishes



Heat-treated oak



Avana



Carbone oak



pietra piacentina

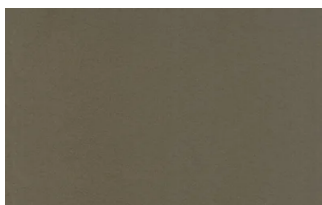
## Metals

### METALS 1

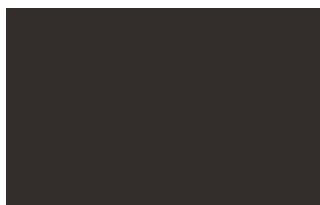
#### Metals 1



Black



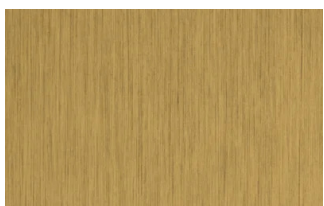
Titanium



Brown

## METALS 2

### Metals 2



Antiqued brass