

Tables

Kiri



It is a long table with two central legs and a fixed top, rectangular or oval, with straight or 30° sloping perimeter edge depending on the preferred style.



METAL BASE

The two vertical elements that serve as legs are designed in a succession of irregularly pitched metal rods arranged in a cross pattern. The result is striking and airy.



FIXED TOP

Rectangular fixed top in a variety of wood finishes, or oval always made of wood and also in lacquered glass or stoneware.



KIRI TABLE AND TAILOR CHAIR

Kiri's precise lines recall the meticulous cuts and folds of the Tailor chair - a perfect match.



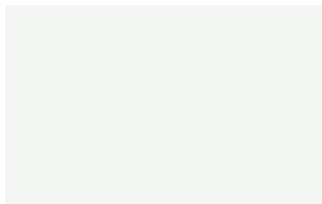
FINISHES

See what finishes are available for the Kiri table and start imagining what its perfect version will look like to furnish your space.

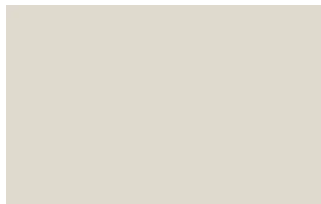
Lacquers

MATT LACQUERS

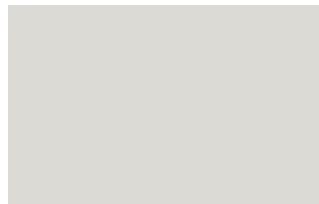
Matt lacquers



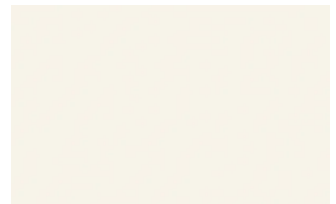
Bianco



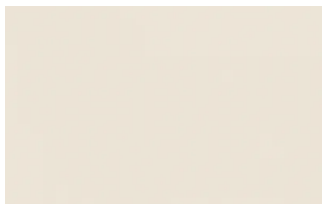
Ghiaccio



Sabbia



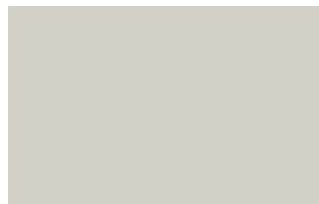
Panna



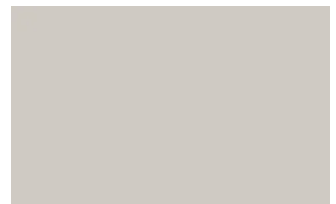
Crema



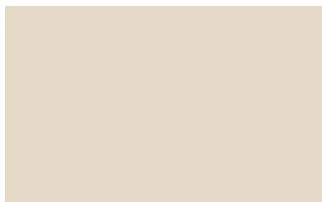
Grigio seta



Grigio perla



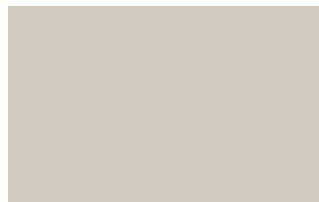
Light grey



Fior di loto



Giallo senape



Tortora



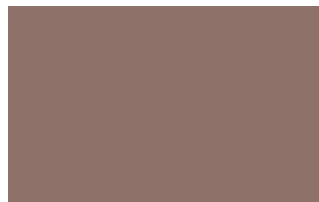
Canapa



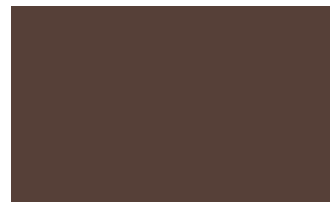
Corda



Dark grey



Terracotta



Moka



Rosso bordeaux



Rosso



Rosa cipria



Bruciato



Carta da zucchero



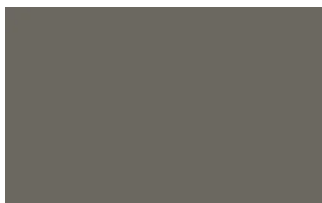
Grigio blu



Verde pallido



Verde malva



Grigio aston



Celeste



Turchese



Grigio Garda



Blu cobalto



Oceano



Grigio antracite

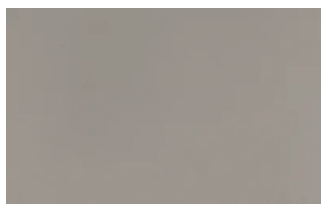


Nero

Metallic matt lacquers



Titanio



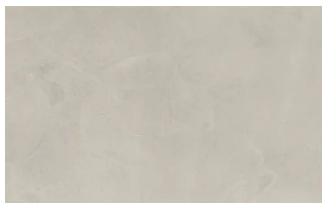
Nichel



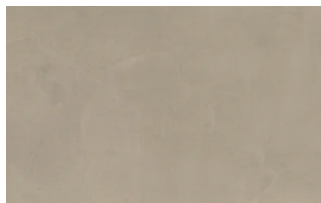
Piombo

UP SURFACES

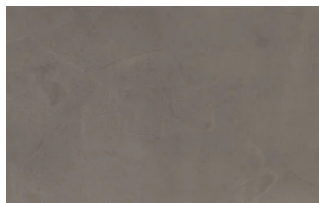
Concrete effect lacquers



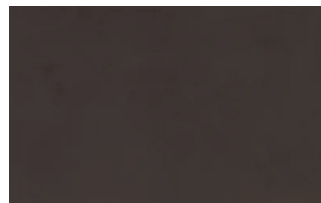
Perla



Argilla

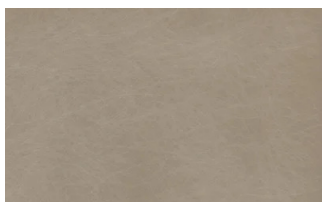


Grafite

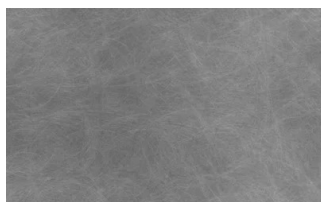


Lava

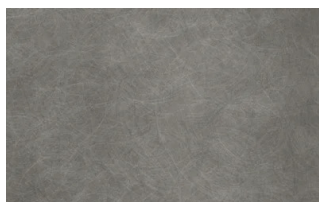
Metal effect lacquers



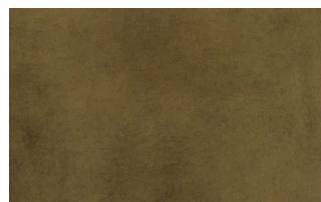
Nichel



Piombo



Titanio



Ossido ottone



Ossido bronzo

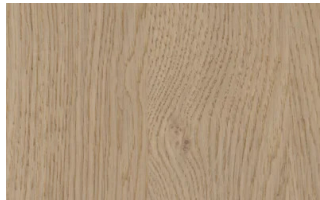
Wood

WOODS 1

Woods 1



Natural oak



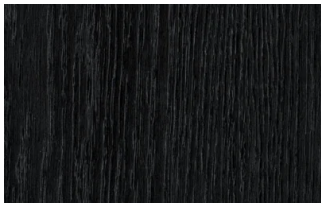
Visone oak



Cenere oak



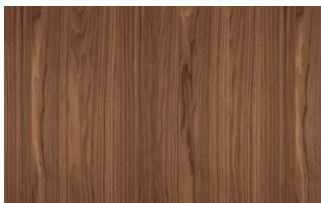
Castoro oak



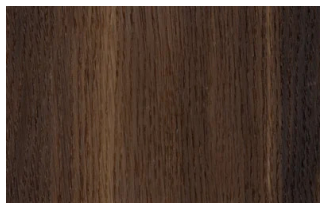
Carbone oak

WOODS 2

Woods 2



Canaletto walnut



Heat-treated oak

Textured finishes

TEXTURED FINISHES

Textured finishes



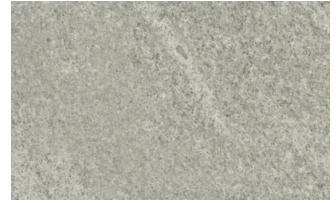
Heat-treated oak



Avana



Carbone oak



pietra piacentina

Metals

METALS 1

Metals 1



Black



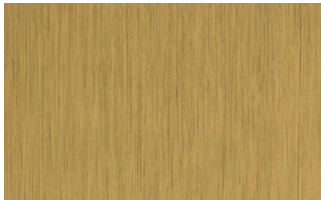
Titanium



Brown

METALS 2

Metals 2



Antiqued brass