

## Tables

## Eiffel



A table that is its own base. Eiffel dominates the scene, sleek and elegant. It has a stoneware or lacquered glass top, with a fixed round or oval shape, the latter also in an extendable version.



## CROSS TABLE BASE

Eiffel is a table with crossed legs composed of thin metal blades arranged to facilitate the movements of the sitter. This practicality is maintained even in the case of the version with an extendable oval top because the two extensions are inserted at opposite ends. The metal blades lend dynamism and value to an often less visible part as is the base.



## REFINED EXTENSIONS

Eiffel's extensions are a testament to Dallagnese's attention to valuable details. They are bilia extensions, meaning the vein of stoneware continues precisely on them as well, without aesthetic interruption. They operate through a mechanism inserted under the table top, made of metal with a black finish.



## EIFFEL ROUND VERSION

The Eiffel round table with fixed top is perfect for smaller rooms and has a feature all its own. The metal base is formed not only by the characteristic metal blades, but encloses and supports them from below with a circle that echoes the shape of the top and makes the whole more harmonious. To match, there is also the optional swivel pass-through top, made of wood with a sloping perimeter edge.



## COORDINATING STYLES

Eiffel is striking for the angular lines of its base combined with the rounded lines of its top. This allows one to follow one's own taste: more warmth in the soft forms of the Supernova chair or more rigor with the Katana sideboard, which, however, allows a glimpse of a cozy Hull armchair in the background.



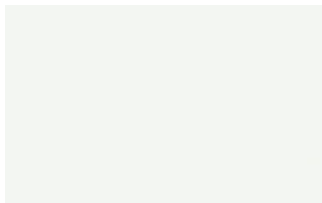
# FINISHES

How do you envision your Eiffel table? Start by discovering the finishes available for the top and base.

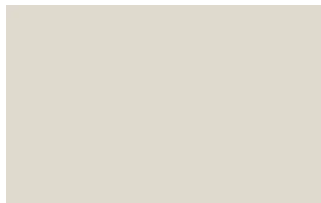
## Lacquers

### MATT LACQUERS

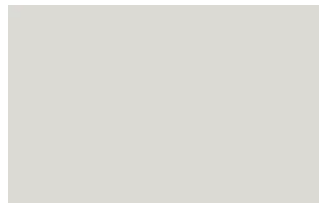
Matt lacquers



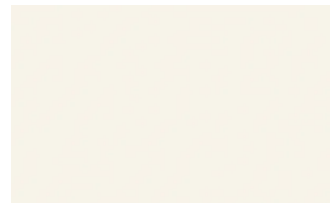
Bianco



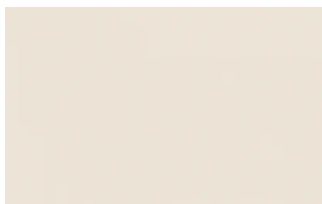
Ghiaccio



Sabbia



Panna



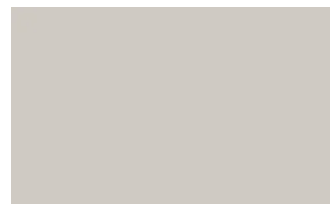
Crema



Grigio seta



Grigio perla



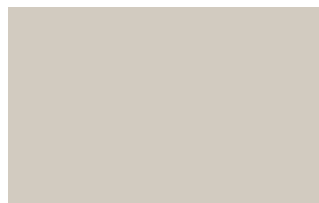
Light grey



Fior di loto



Giallo senape



Tortora



Canapa



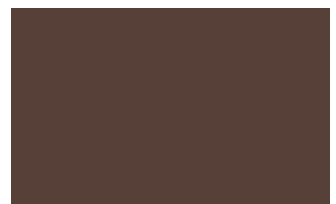
Corda



Dark grey



Terracotta



Moka



Rosso bordeaux



Rosso



Rosa cipria



Bruciato





Carta da zucchero



Grigio blu



Verde pallido



Verde malva



Grigio aston



Celeste



Turchese



Grigio Garda



Blu cobalto



Oceano



Grigio antracite

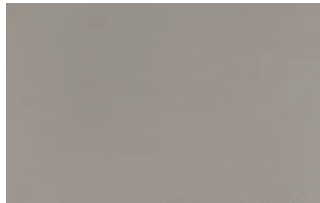


Nero

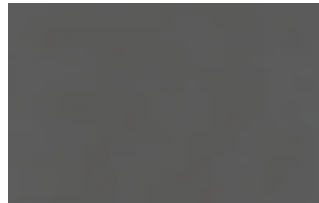
## Metallic matt lacquers



Titanio



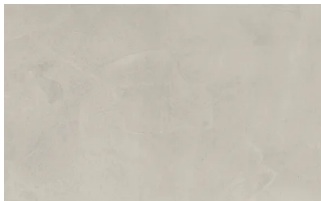
Nichel



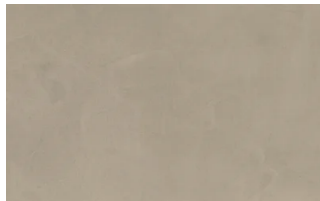
Piombo

## UP SURFACES

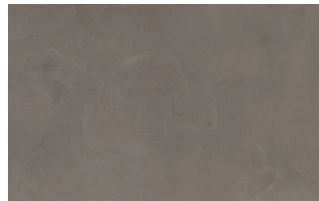
### Concrete effect lacquers



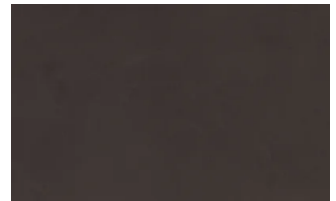
Perla



Argilla

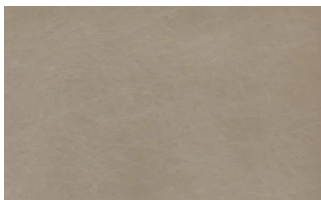


Grafite

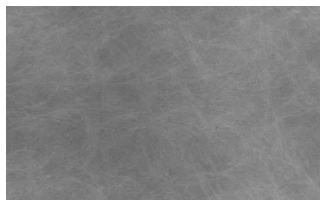


Lava

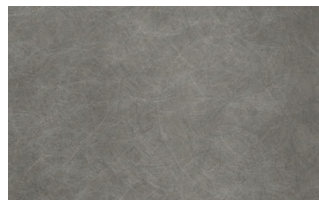
### Metal effect lacquers



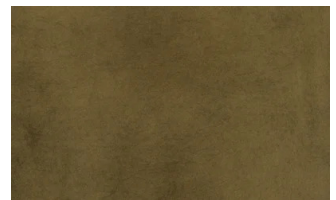
Nichel



Piombo



Titanio



Ossido ottone



Ossido bronzo

## Wood

### WOODS 1

#### Woods 1



Natural oak



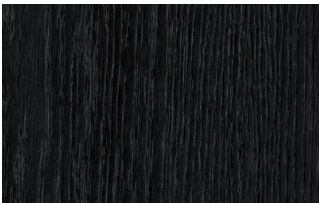
Visone oak



Cenere oak



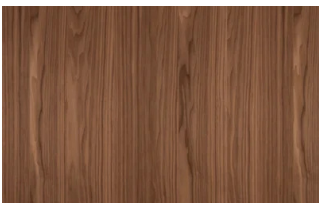
Castoro oak



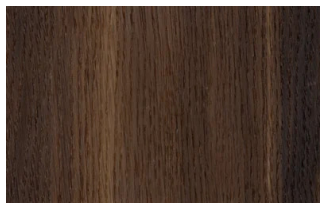
Carbone oak

### WOODS 2

#### Woods 2



Canaletto walnut

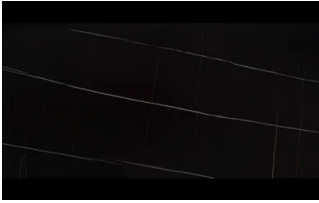


Heat-treated oak

## Stoneware

### STONEWARE

#### Matt stoneware



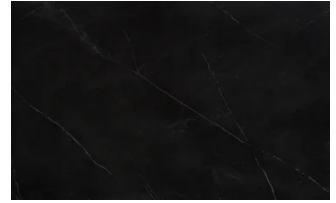
Azalai nero



Jasper moka



Storm grigio



Storm nero

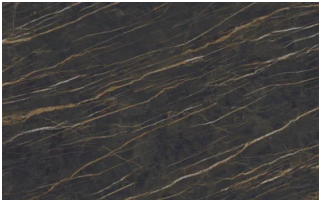


Senda grigio

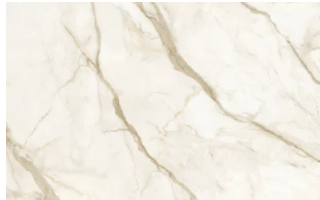


Pacific bianco

## Glossy stoneware



Noir desir



Calacatta oro

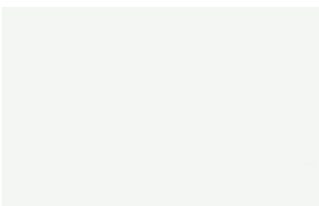


Breche capraia

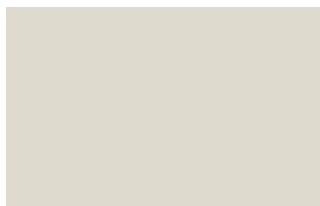
## Glasses

### LACQUERED GLASSES

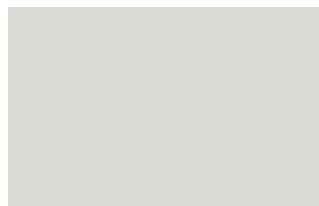
#### Lacquered glasses



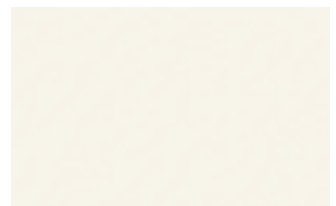
Bianco



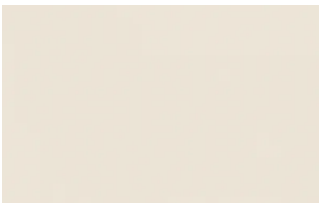
Ghiaccio



Sabbia



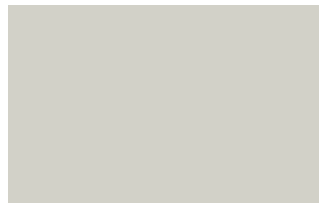
Panna



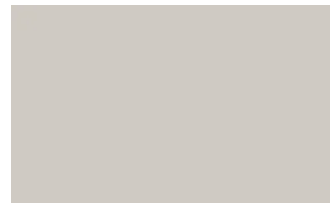
Crema



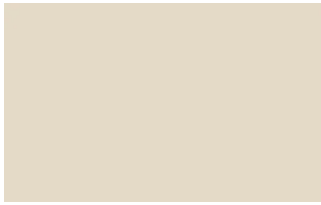
Grigio seta



Grigio perla



Light grey



Fior di loto



Giallo senape



Tortora



Canapa



Corda



Dark grey



Terracotta



Moka



Rosso bordeaux



Rosso



Rosa cipria



Bruciato



Carta da zucchero



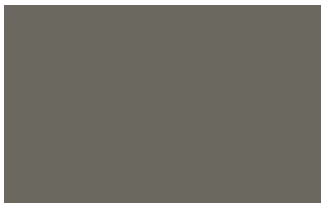
Grigio blu



Verde pallido



Verde malva



Grigio aston



Celeste



Turchese



Grigio Garda



Blu cobalto



Oceano



Grigio antracite



Black

## Metals

### METALS1

Metals 1





Black



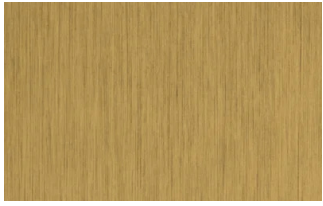
Titanium



Brown

## METALS 2

### Metals 2



Antiqued brass