

Armchairs

# Planka

The Planka armchair originates from a well-upholstered footstool that has come a long way and has a backrest, or rather two backrest options, one low, the other high. It has enveloping lines and comfortable shapes, supported by tiny feet that almost disappear from view.



## ARMCHAIR IN FABRIC, LEATHER, ECO-LEATHER

You can upholster the Planka armchair, with matching footrest or even without, in the entire range of finishes, selected by Dallagnese for fabrics, leathers and eco-leathers, and decide the size of its backrest. There is the comfortable half-back version and the high one, truly enveloping.



# FINISHES

Discover the finishes available for your comfortable and enveloping Planka armchair. They have been selected from Dallagnese's range of fabrics, leathers and eco-leathers.

## Fabrics

### BASIC

X370



3



4



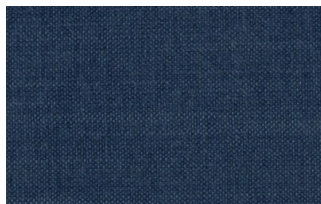
9



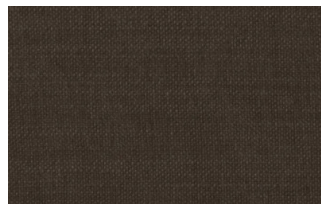
10



23

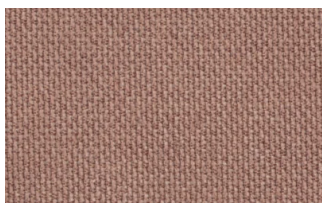


29



32

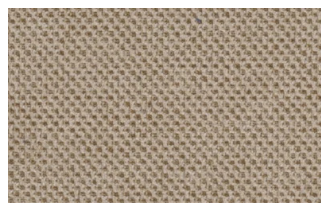
### Relax



5



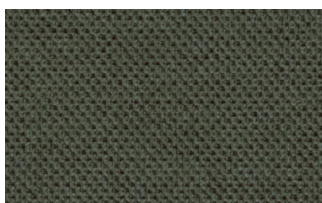
20



25



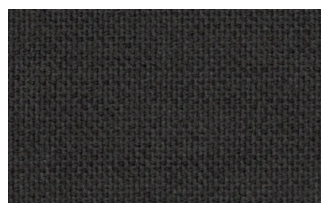
53



62



66



74



81



96



103



## Divina



15



19



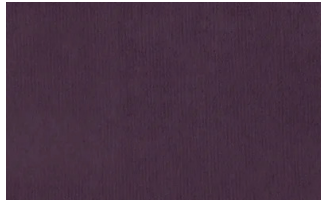
21



22



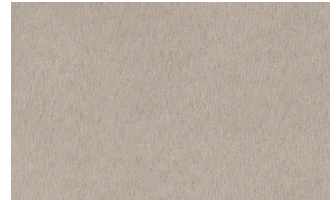
34



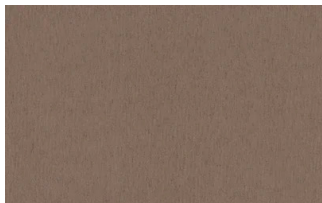
46



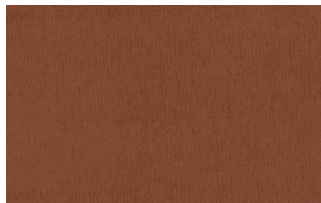
49



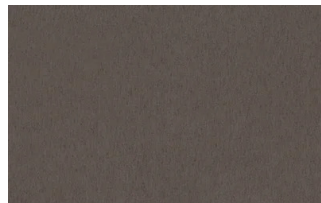
50



76



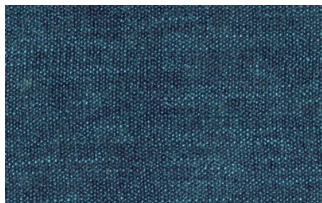
88



561

## START

### Scoop



6



7



9



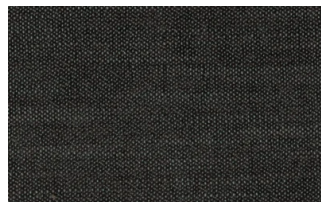
25



31



59

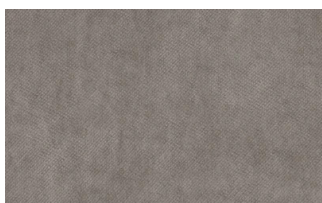


104



561

### Stropiccio



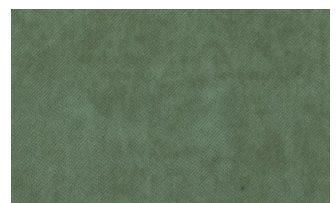
4



6



8

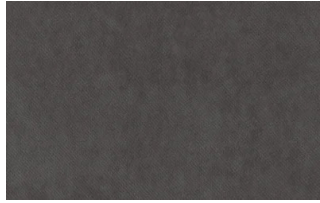


17





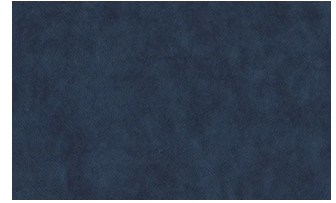
19



20



22

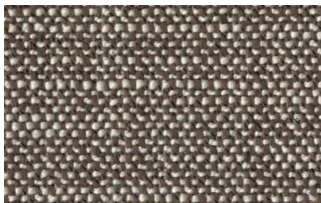


23

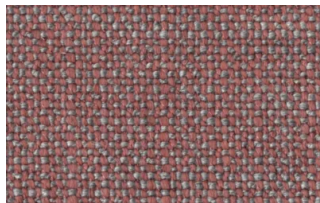


30

## Nodone



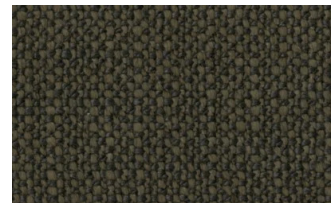
1302



1307



1308



1309



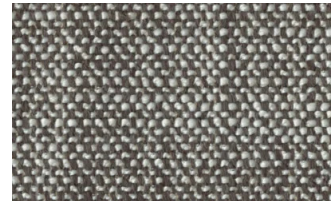
1310



1311

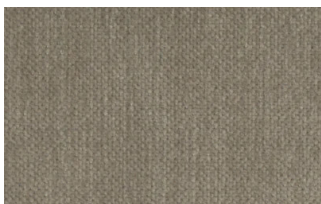


1313

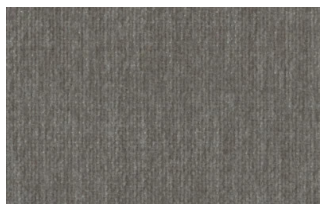


1314

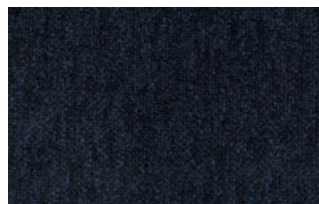
## R Flair



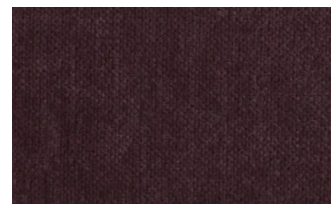
P321-6200-039



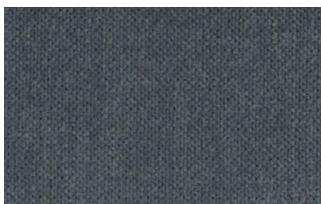
P321-6200-901



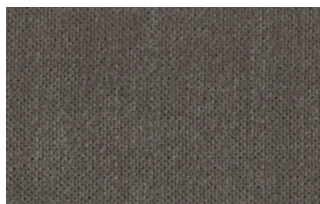
P321-6300-419



P321-6300-503



P321-6300-988



P321-6300-996

## EXTRA

### Anice



1



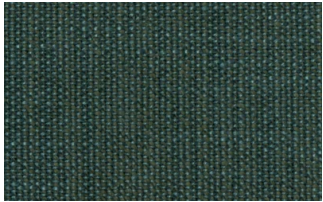
2



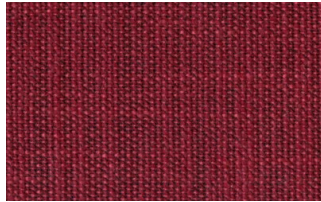
3



4



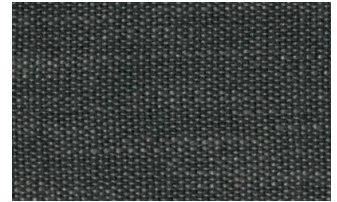
5



6



7

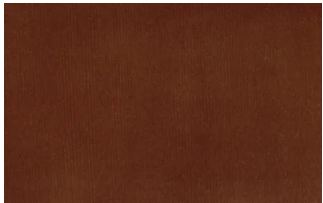


8

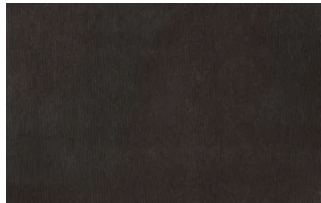


9

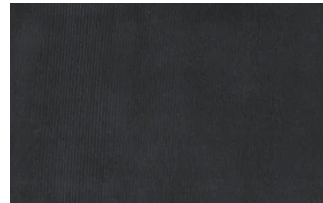
## Lovely



6



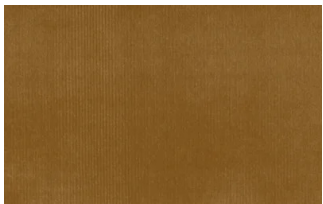
10



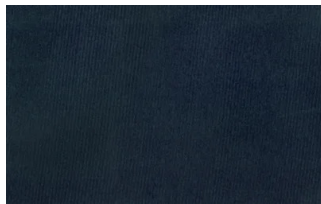
19



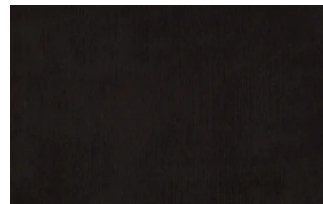
22



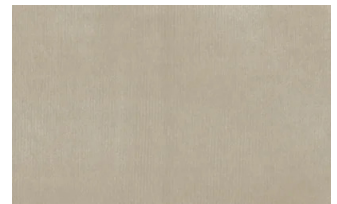
27



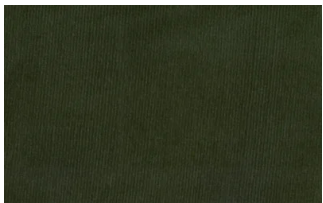
31



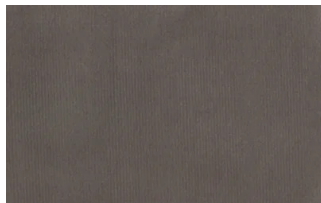
36



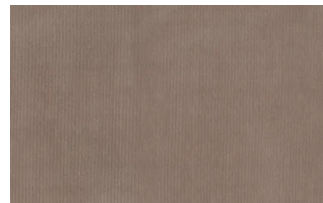
102



113



200



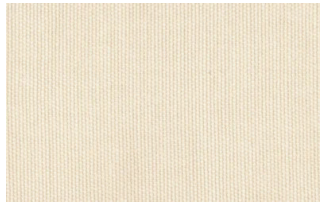
202

## Cosme

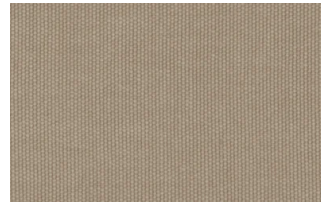




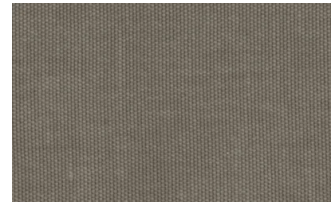
e200



e202



e205



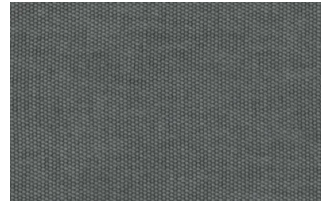
e206



e209



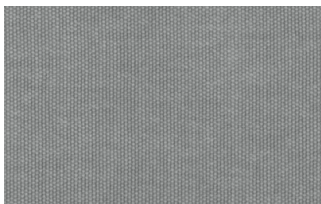
e220



e232



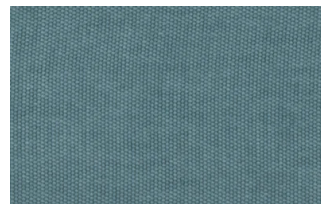
e234



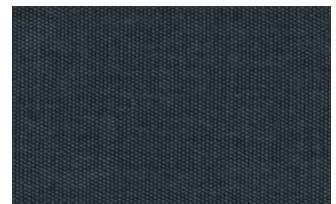
e236



e240

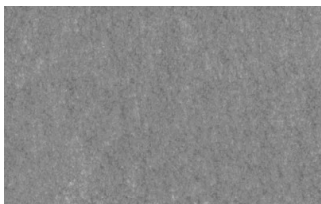


e241

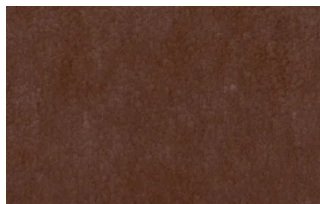


e244

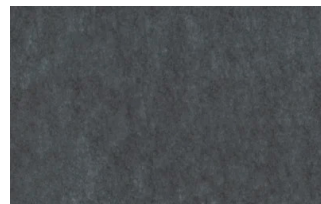
## Soda



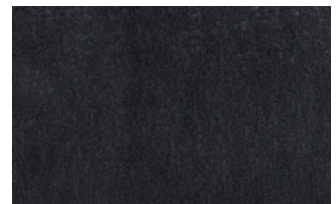
29



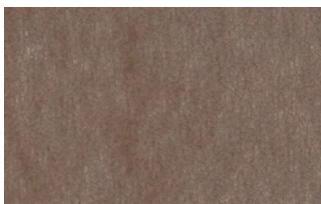
30



39



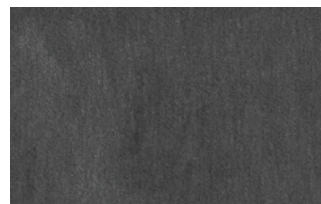
41



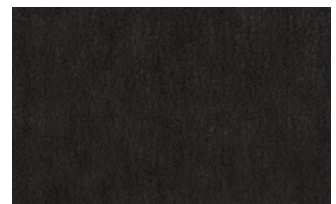
56



62



74



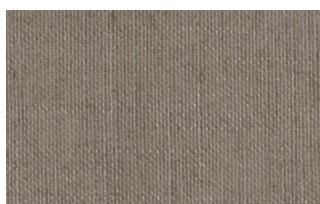
104

## LIGHT

### Lima



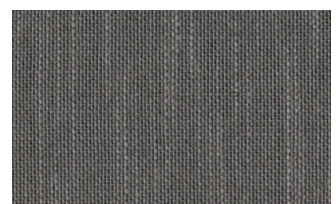
2



5

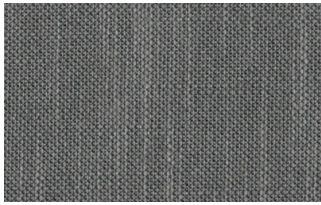


10

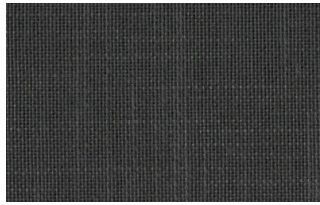


12





14



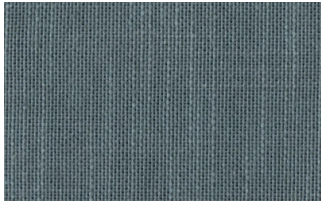
16



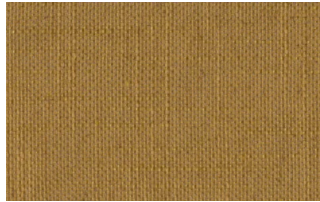
23



29



31



43

## Mimi



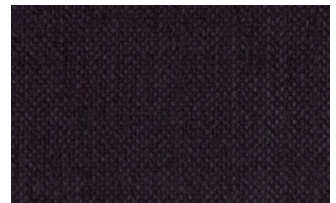
A3004



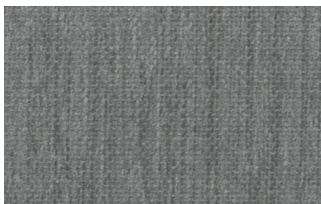
A3005



A3006



A3014

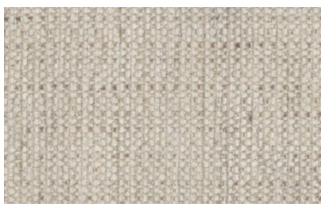


A3018

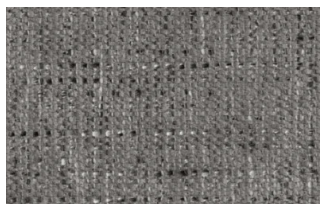


A3023

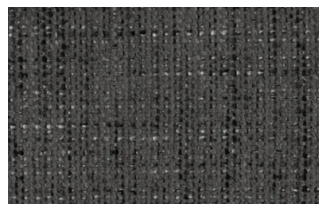
## Memphis



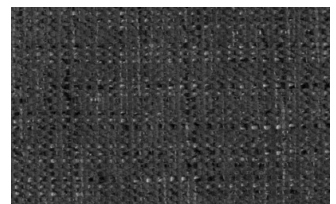
1



6



10



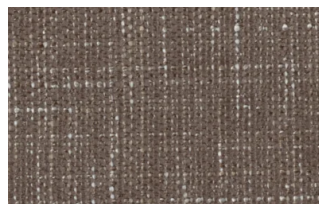
11



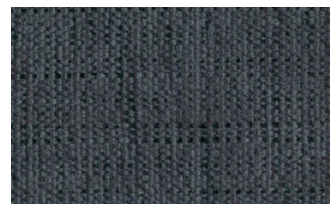
13



14



15



16

## SUPER

## Hylemt





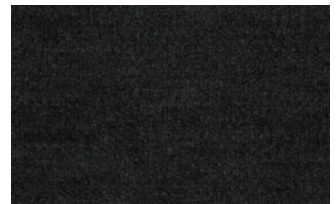
25



102



109



117



121



204



207

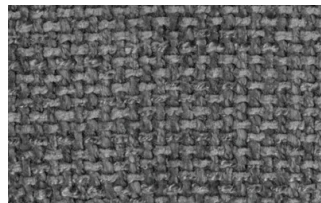
## Axum



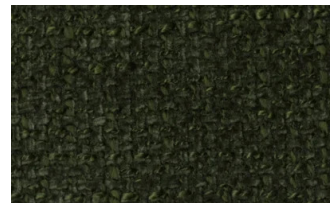
3



11



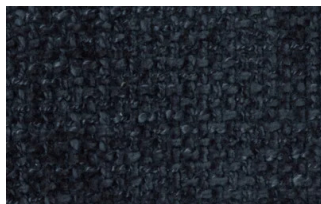
12



18



21



23



29

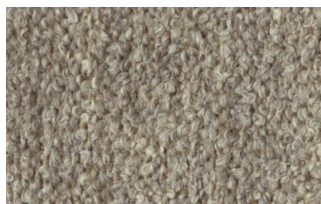


30

## Barnum Unito



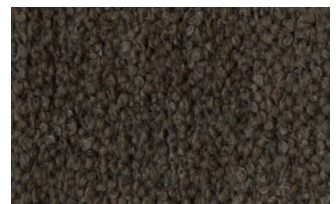
1 bianco



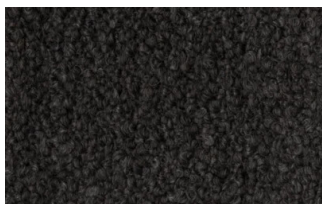
2 corda



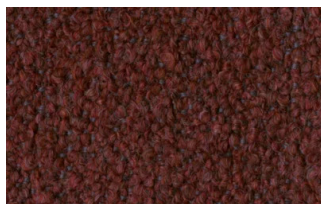
9 bosco



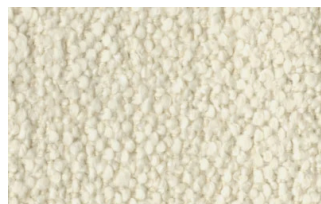
10 piombo



13 lavagna



23 bruciato

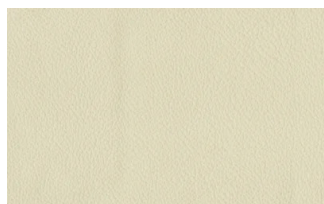


24 lana

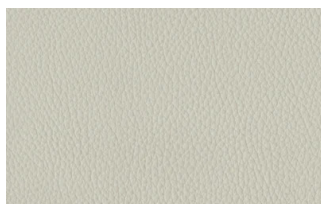
## Leathers

## K LEATHERS

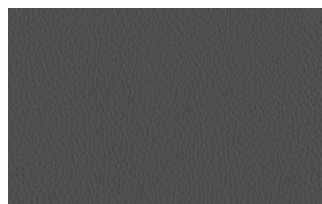
### Leather



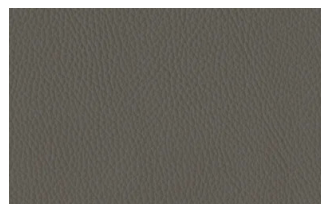
200



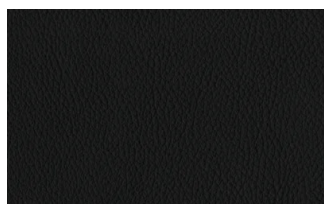
202



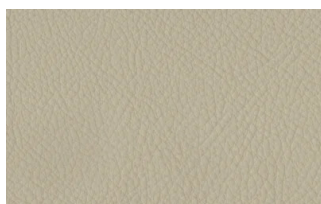
204



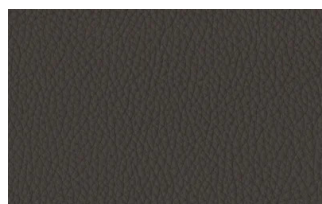
206



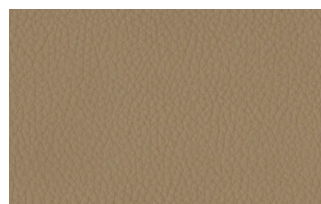
207



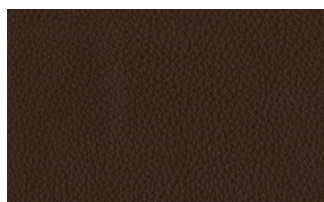
208



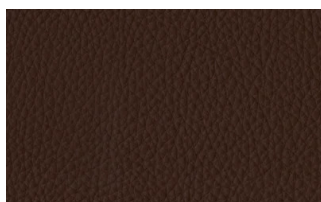
211



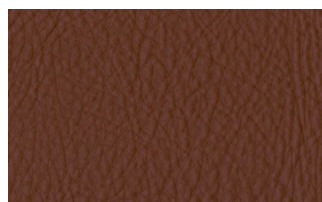
214



217



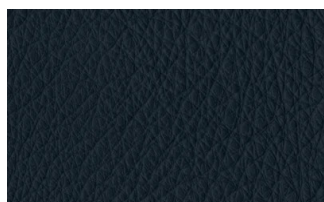
224



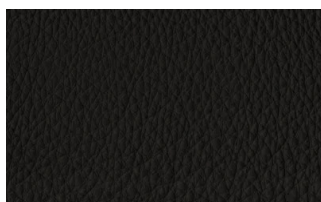
228



234



274



298



301

## W LEATHERS

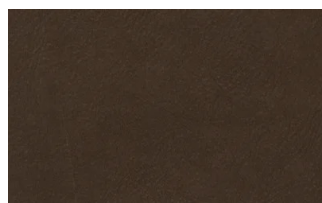
### Nabuk



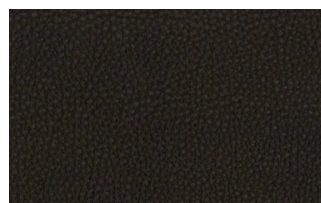
Creta



Camel



marrone

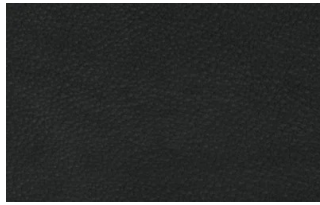


Testa di moro





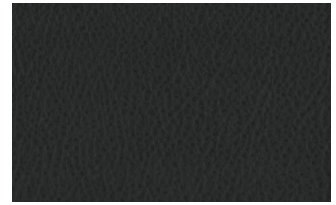
Seppia



Black



Hard leather

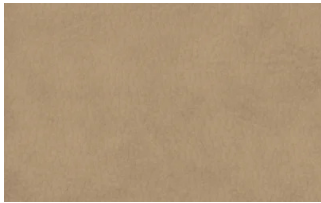


Grigio

## Ecoleathers

### EXTRA ECO-LEATHERS

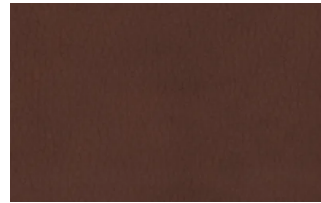
#### Vintage eco-leather



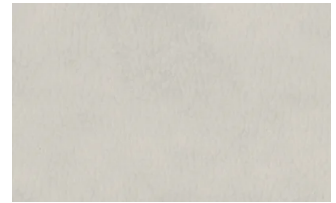
2



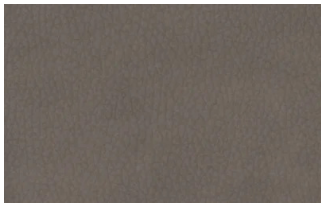
3



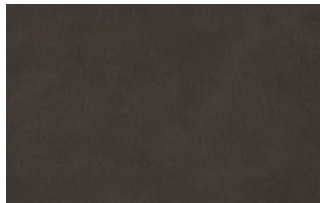
4



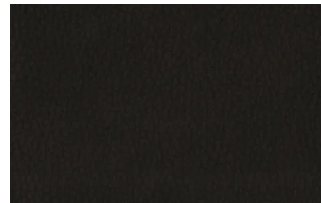
6



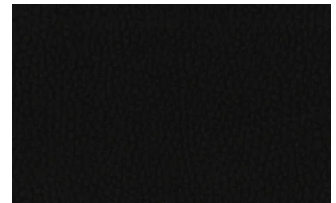
7



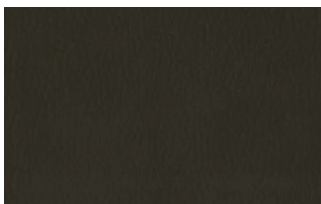
8



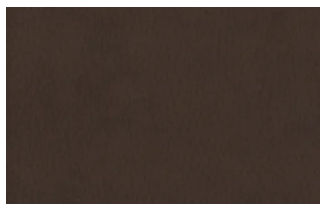
9



14



19



22