

Sofas

# Milton



The Milton sectional sofa is great for small spaces because it takes advantage of almost the entire seat. In fact, the upholstered part is comfortable with restrained shapes and made even more graceful and elegant by the canneté edging, applied to backs, cushions and armrests.

## MILTON SECTIONAL SOFA: MODULARITY

The modularity of the Milton sofa is expressed in stand-alone pieces, such as the two-seater, two-and-a-half or three-seater armchair and sofas, or with the same side modules, including the one-seater, plus the possibility of joining the island or sundial, as well as matching decorative cushions and square ottoman.



## MILTON SOFA: DURABILITY

The supporting parts of the Milton sofa are made of durable solid fir and plywood to ensure strength and durability. An essential look is hidden behind the wide selection of fabrics, faux leather and leathers available for the outer covering. The base is made of brown painted metal.



## DETAILS WITH AN ARTISANAL FLAVOUR

The Milton sofa has backrests, cushions and armrests featuring a canneté perimeter border that creates a raised decoration. It can be chosen in a wide range of colors, either contrasting or matching.

The foot chosen, painted brown, suits any type of fabric, leather or faux leather, and gives the sofa itself an elegant and prestigious look.



## FABRIC SELECTION

The extensive modularity of the Milton sofa also features an extensive finish chart for leather, faux leather and fabric upholstery, in the latter case with completely removable covers. You can also choose matching or contrasting color edging as desired.





# FINISHES

Discover now all the fabric, leather or faux leather finishes available to upholster your Milton sofa.

## Fabrics

### BASIC

#### X370



3



4



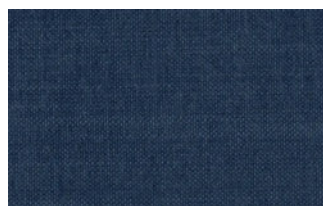
9



10



23

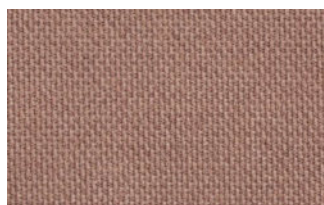


29

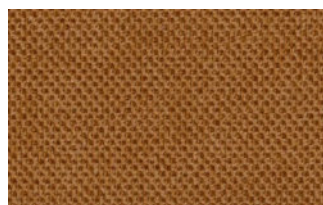


32

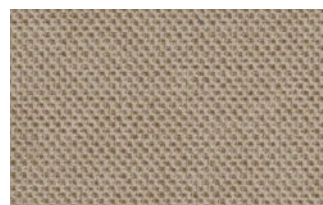
### Relax



5



20



25



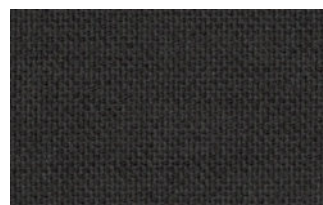
53



62



66



74



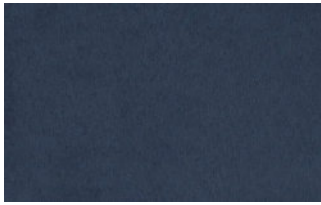
81



96



103



15



19



21



22



34



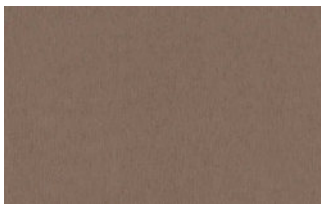
46



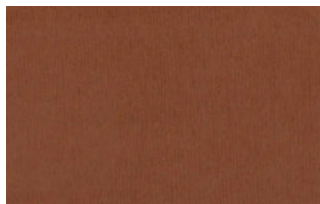
49



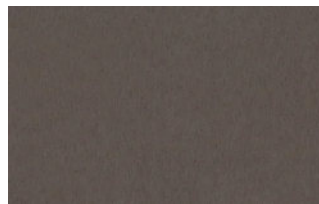
50



76



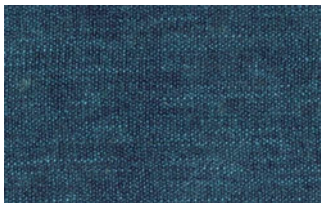
88



561

## START

### Scoop



6



7



9



25



31



59

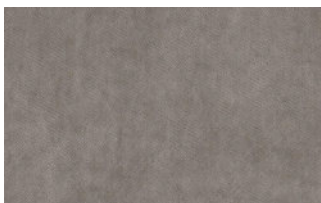


104



561

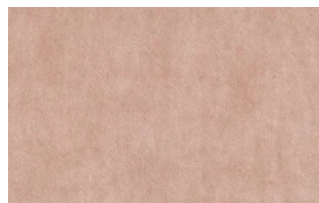
### Stropiccio



4



6



8



17





19



20



22

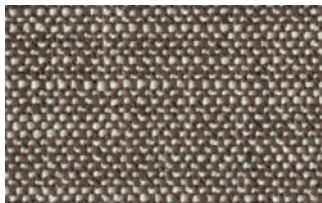


23

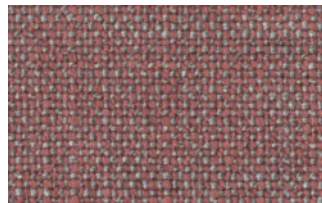


30

## Nodone



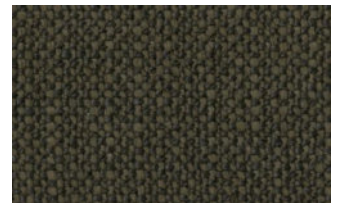
1302



1307



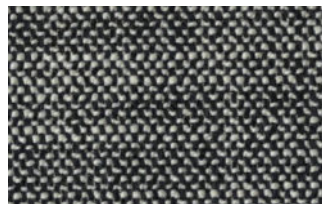
1308



1309



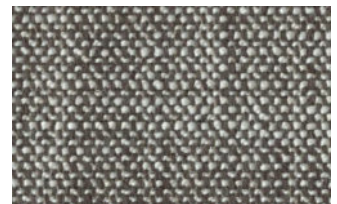
1310



1311

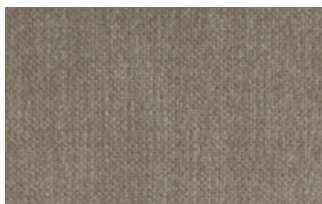


1313

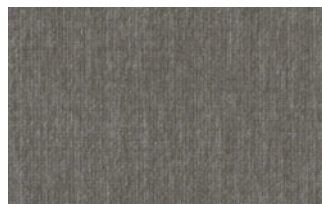


1314

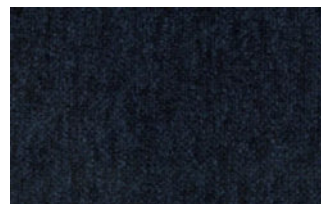
## R Flair



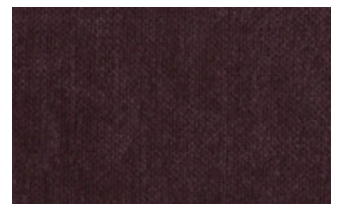
P321-6200-039



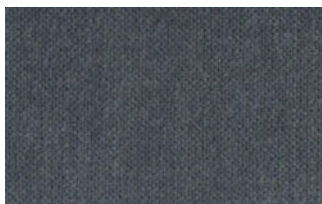
P321-6200-901



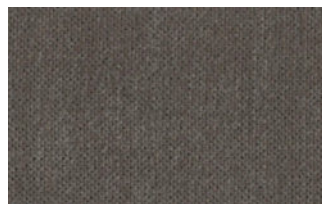
P321-6300-419



P321-6300-503



P321-6300-988



P321-6300-996

## EXTRA

### Anice



1



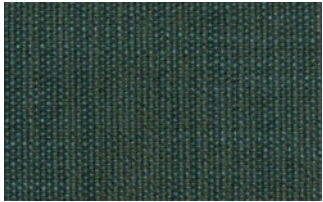
2



3



4



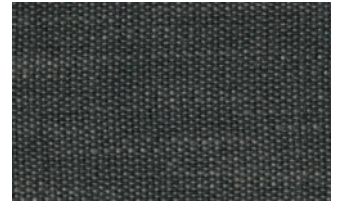
5



6



7

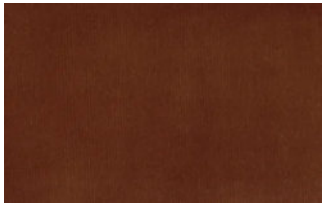


8

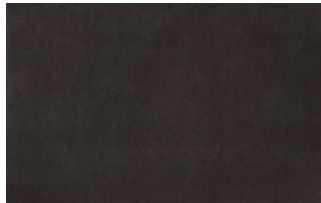


9

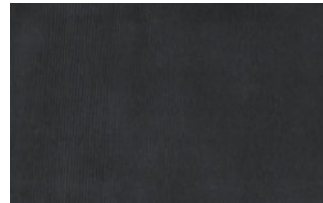
## Lovely



6



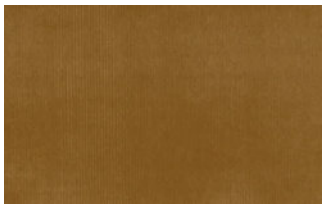
10



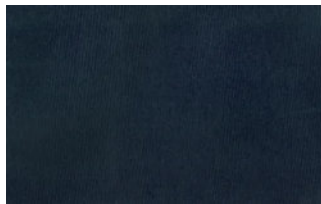
19



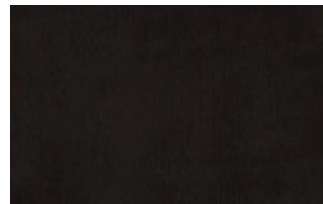
22



27



31



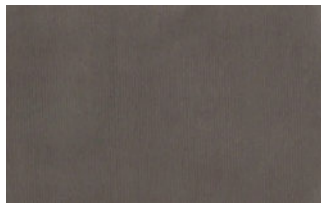
36



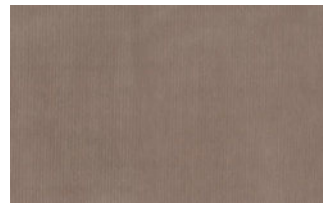
102



113



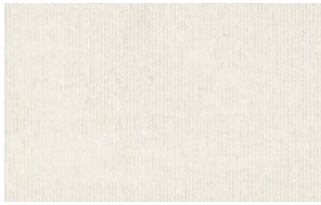
200



202

## Cosme





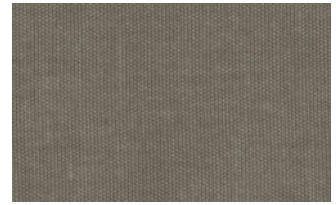
e200



e202



e205



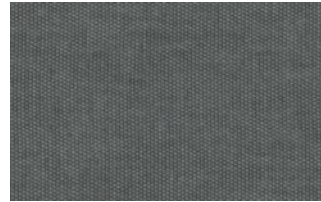
e206



e209



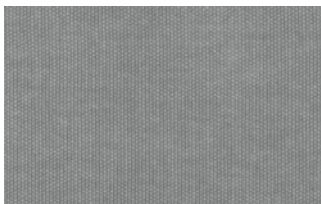
e220



e232



e234



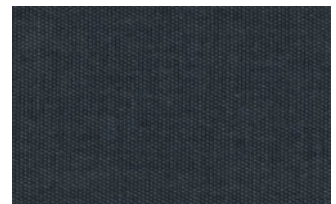
e236



e240



e241

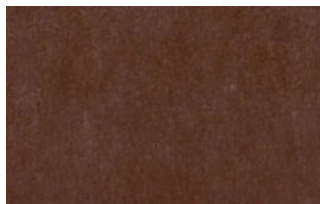


e244

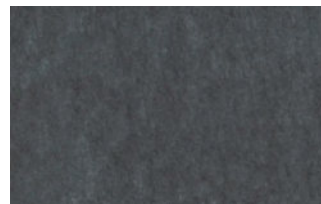
## Soda



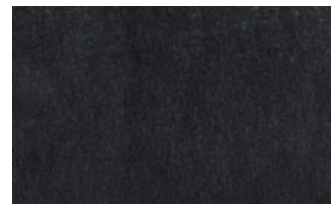
29



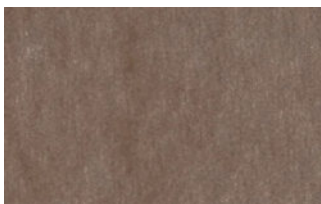
30



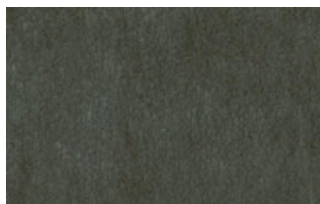
39



41



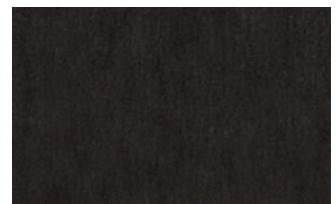
56



62



74



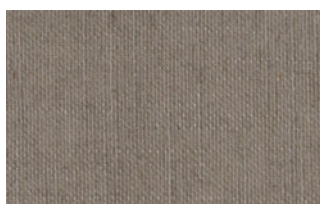
104

## LIGHT

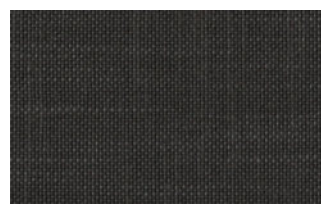
### Lima



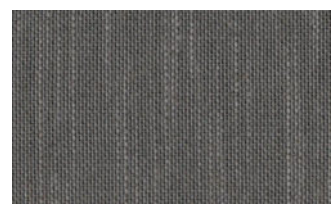
2



5

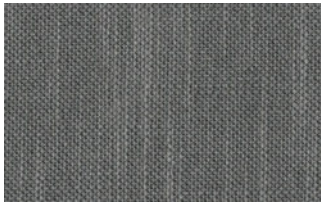


10

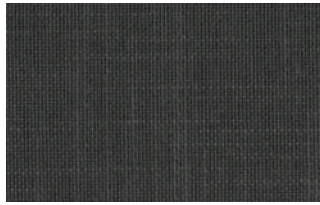


12





14



16



23



29



31



43

## Mimi



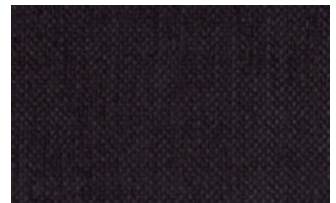
A3004



A3005



A3006



A3014



A3018

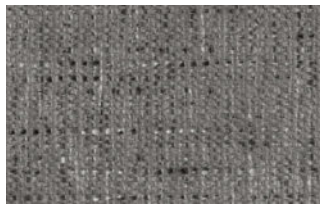


A3023

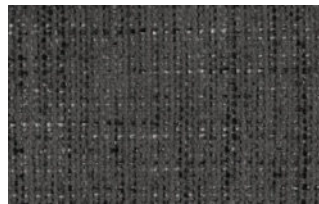
## Memphis



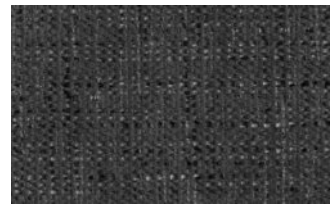
1



6



10



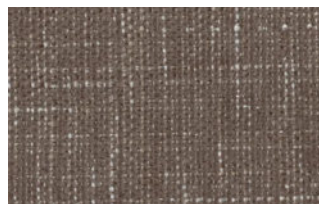
11



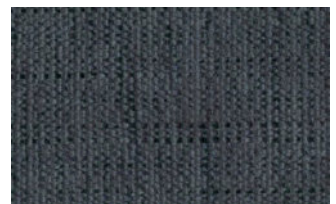
13



14



15



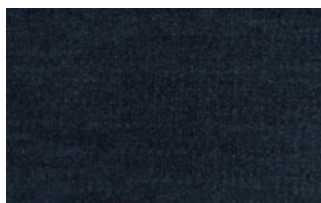
16

## SUPER

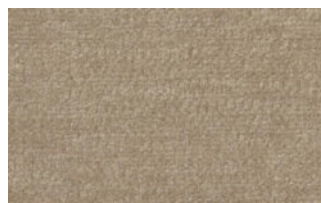
### Hylemt



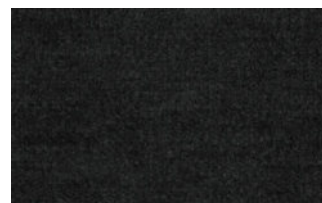
25



102



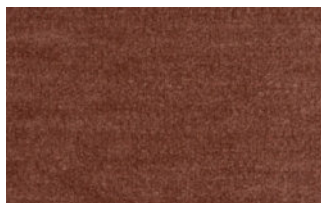
109



117



121



204



207

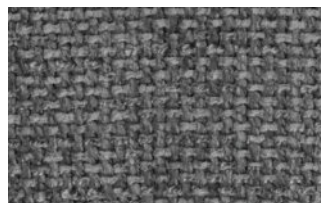
## Axum



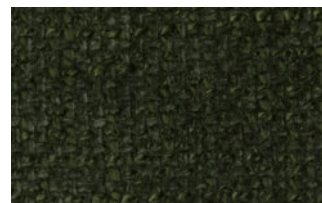
3



11



12



18



21



23



29



30

## Barnum Unito



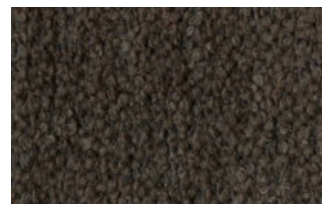
1 bianco



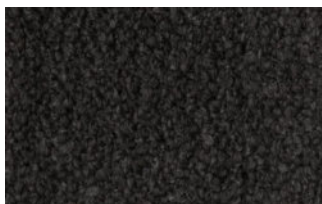
2 corda



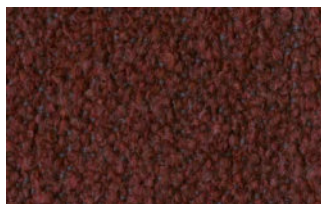
9 bosco



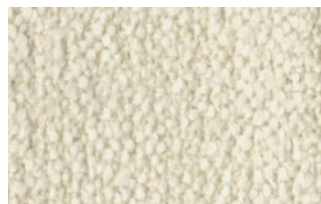
10 piombo



13 lavagna



23 bruciato



24 lana



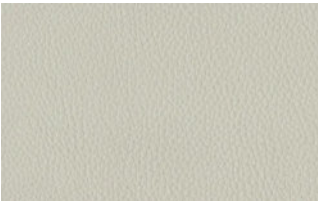
# Leathers

## K LEATHERS

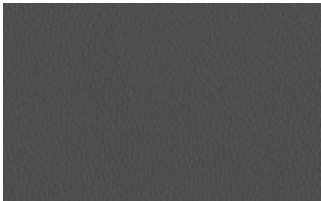
Leather



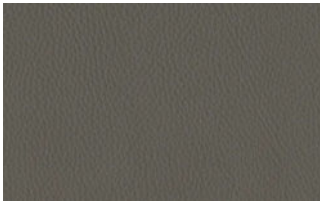
200



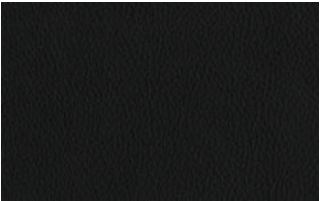
202



204



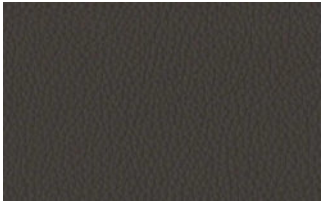
206



207



208



211



214



217



224



228



234



274



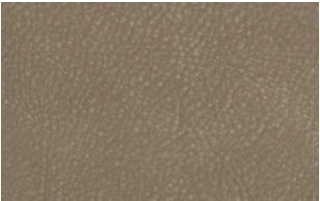
298



301

## W LEATHERS

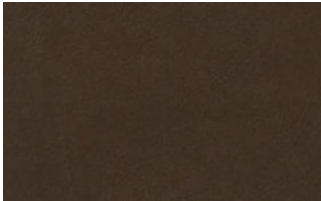
Nabuk



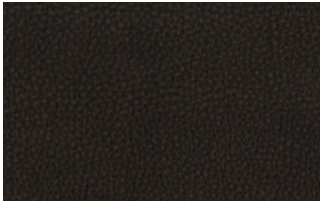
Creta



Camel

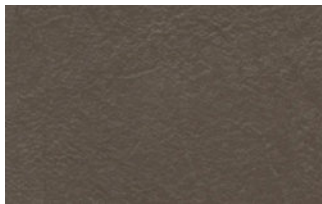


marrone

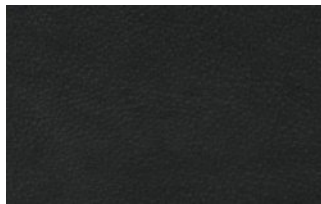


Testa di moro

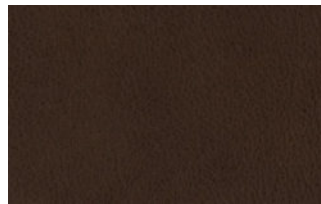




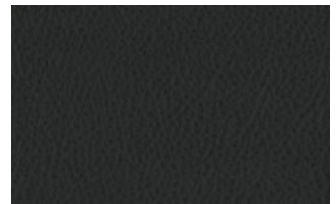
Seppia



Black



Hard leather

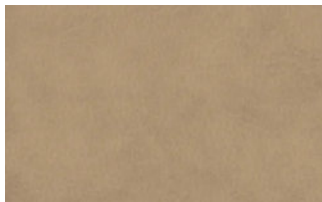


Grigio

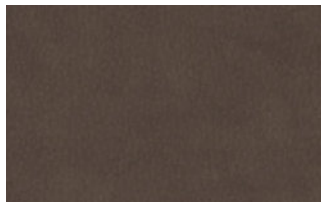
## Ecoleathers

### EXTRA ECO-LEATHERS

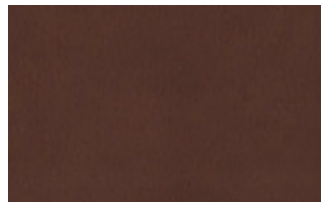
Vintage eco-leather



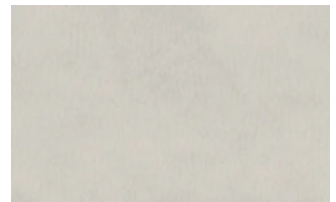
2



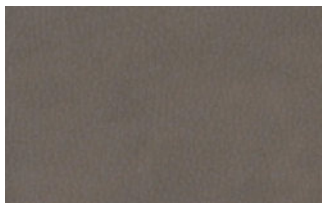
3



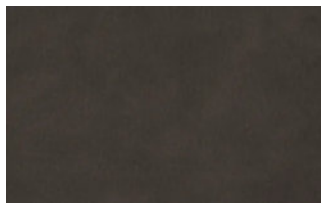
4



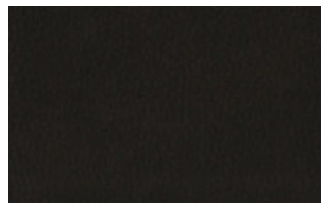
6



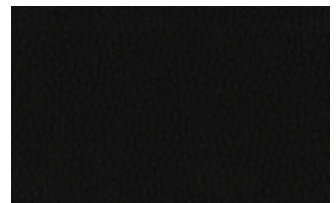
7



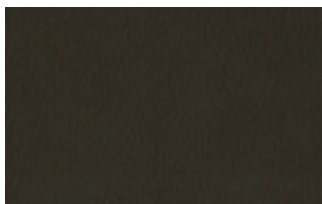
8



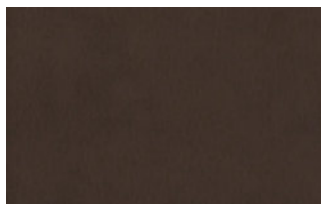
9



14



19



22

## Gros-grain fabric

### GROS-GRAIN FABRIC

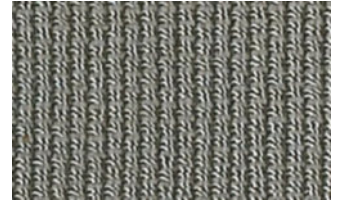
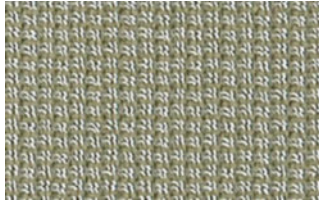
Gros-grain Edging



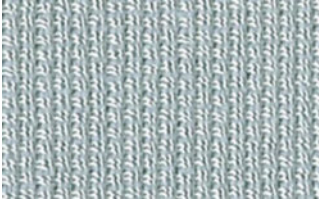
Bianco



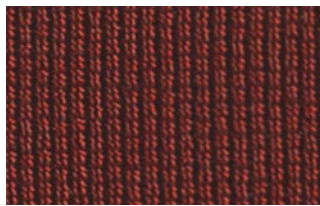
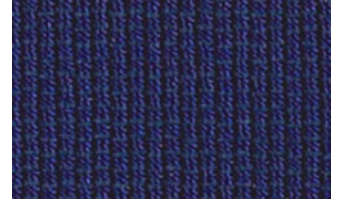
Beige



Tortora



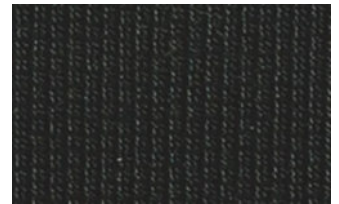
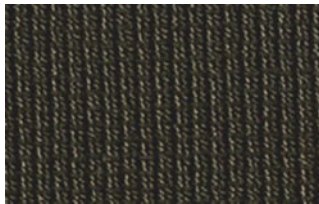
Grigio



Corda



marrone



Black