

Sofas

# Poldo



Poldo is a comfortable and enveloping sofa with important shapes that are perfectly proportioned. It lends itself to being upholstered in both fabric and leather or faux leather, the latter versions made even grittier by the special stitching of the armrest.

## SECTIONAL SOFA: MODULE RANGE

The extensive modularity of the Poldo sofa makes it versatile and complete: it is available in three lengths and various corner solutions. More specifically, you can compose it with the two-seater, two-and-a-half-seater or three-seater sofa frame, with side modules having the same subdivision, plus the corner element, island or sundial. To complement it, there is also the matching square ottoman.



## STYLE DETAILS

The important shapes of the comfortable Poldo sofa are perfectly proportioned, made gritty and unique by the special seam of the armrest, which lends personality to the whole.

The slender polished steel foot, light and rigorous, is also practical because it lifts the sofa off the floor and makes cleaning easier and faster.





# FINISHES

The Poldo sofa lends itself to being upholstered in either leather or faux leather or fabric: which will be your choice? Check out the available finishes now.

## Fabrics

### BASIC

#### X370



3



4



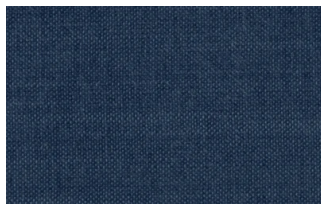
9



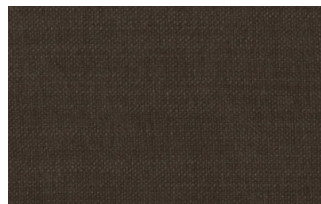
10



23

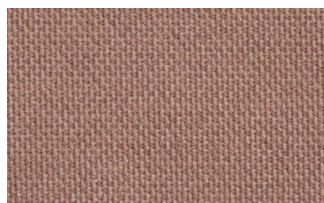


29



32

#### Relax



5



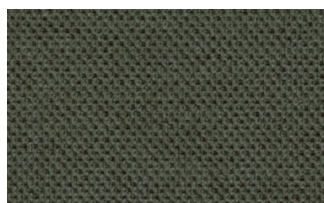
20



25



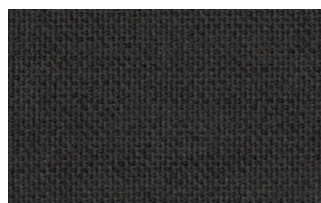
53



62



66



74



81



96



103



## Divina



15



19



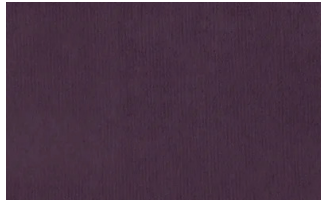
21



22



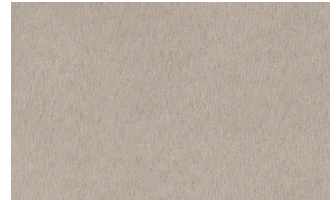
34



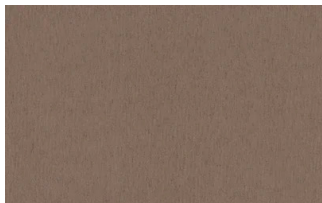
46



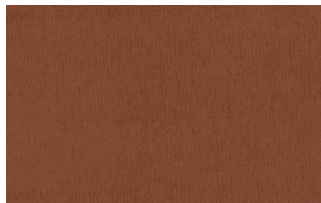
49



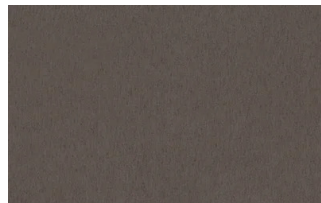
50



76



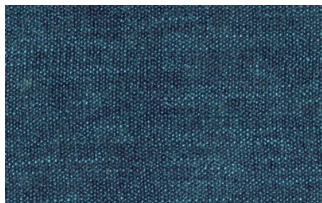
88



561

## START

### Scoop



6



7



9



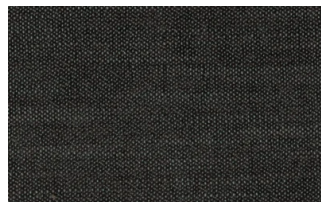
25



31



59

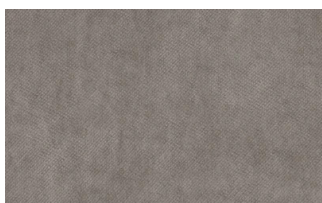


104



561

### Stropiccio



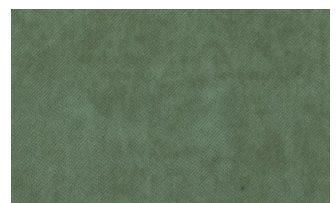
4



6

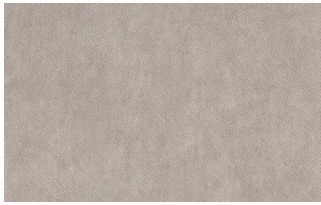


8



17

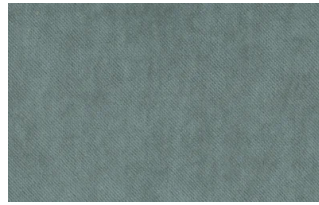




19



20



22

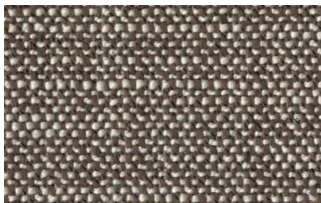


23

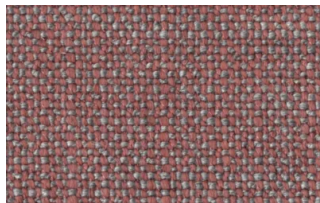


30

## Nodone



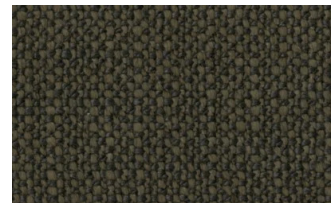
1302



1307



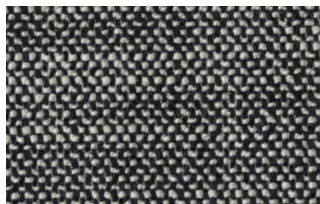
1308



1309



1310



1311

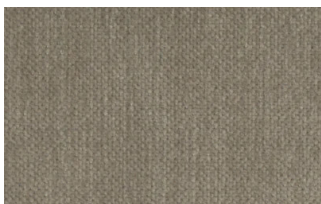


1313

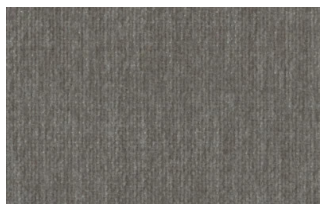


1314

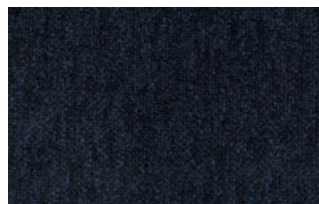
## R Flair



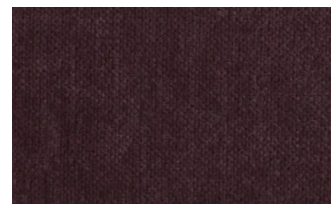
P321-6200-039



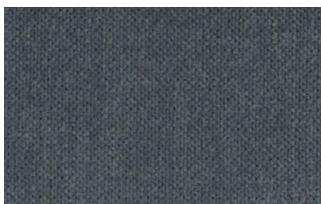
P321-6200-901



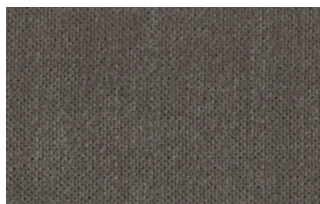
P321-6300-419



P321-6300-503



P321-6300-988



P321-6300-996

## EXTRA

### Anice



1



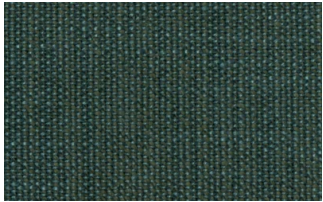
2



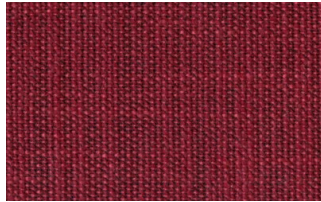
3



4



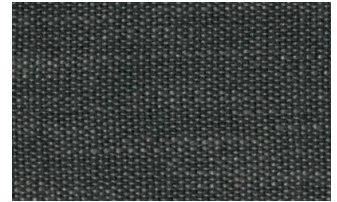
5



6



7

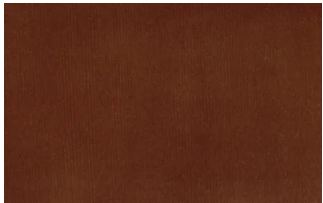


8

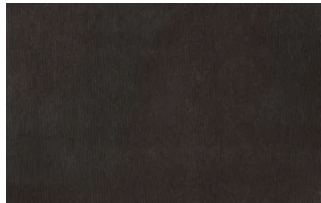


9

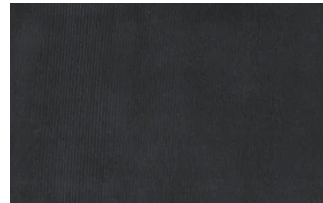
## Lovely



6



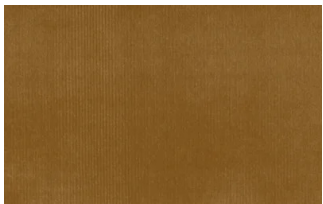
10



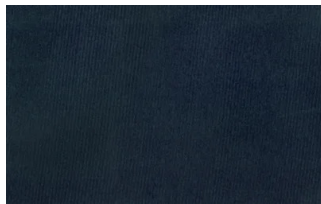
19



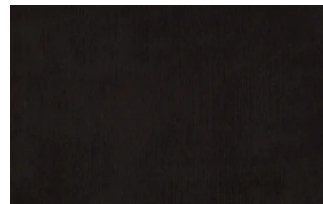
22



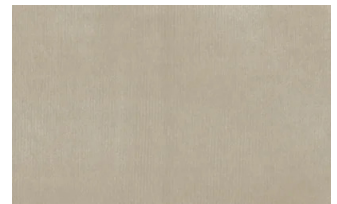
27



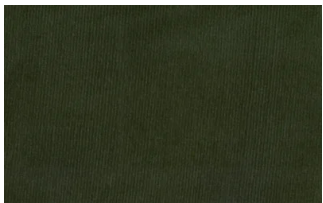
31



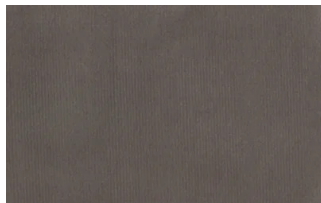
36



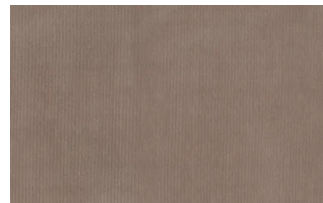
102



113



200



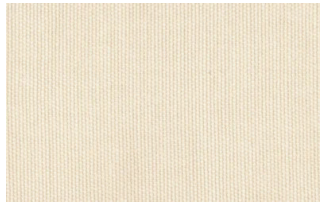
202

## Cosme

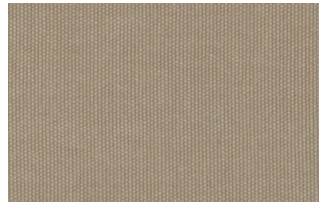




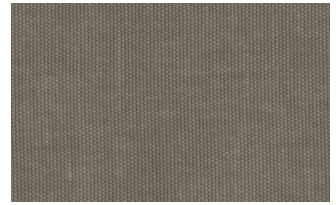
e200



e202



e205



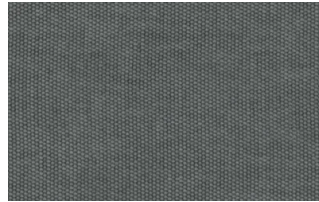
e206



e209



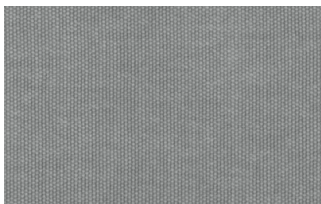
e220



e232



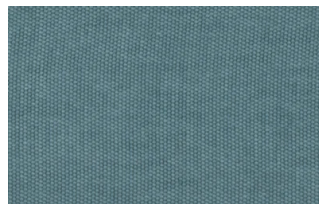
e234



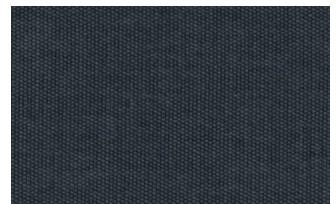
e236



e240

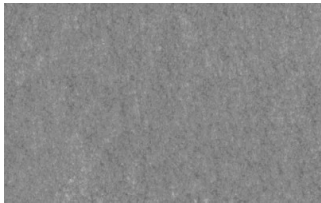


e241

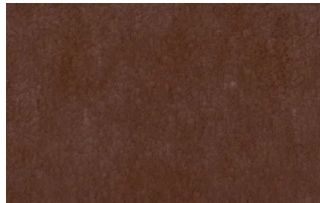


e244

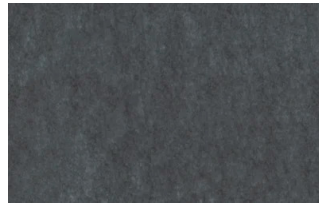
## Soda



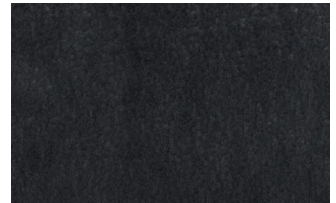
29



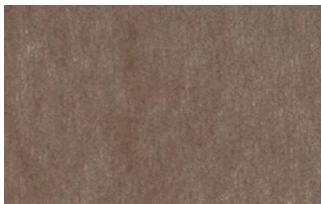
30



39



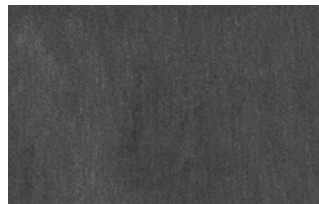
41



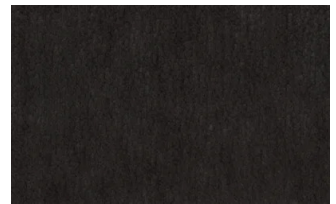
56



62



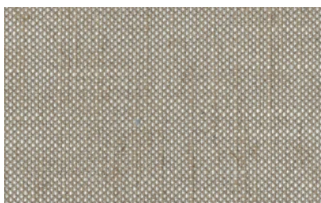
74



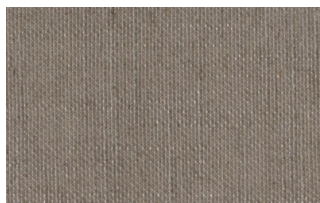
104

## LIGHT

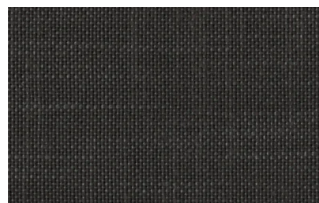
### Lima



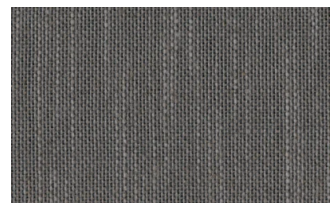
2



5

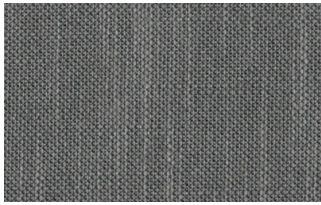


10

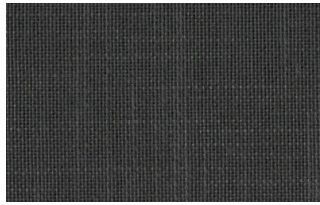


12





14



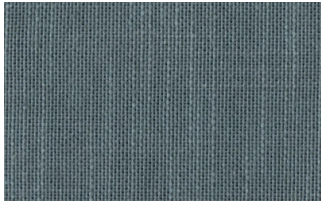
16



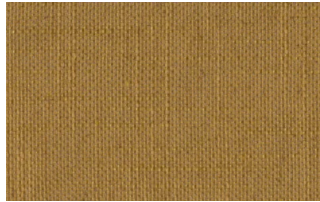
23



29



31



43

## Mimi



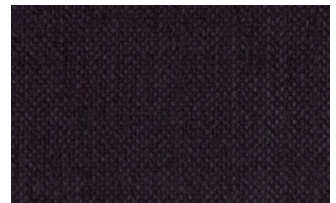
A3004



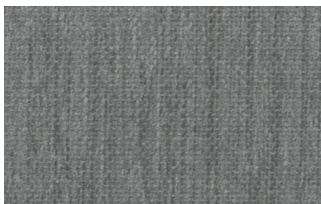
A3005



A3006



A3014

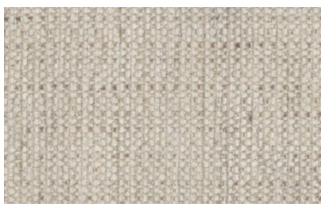


A3018

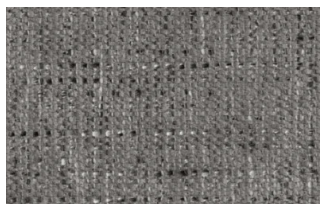


A3023

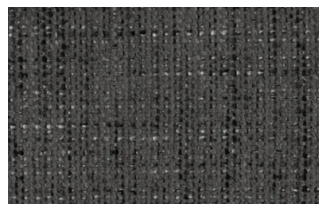
## Memphis



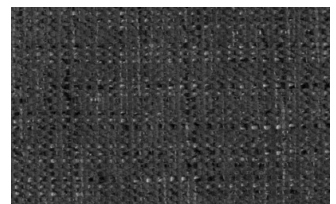
1



6



10



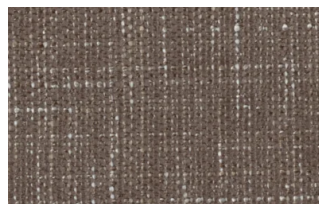
11



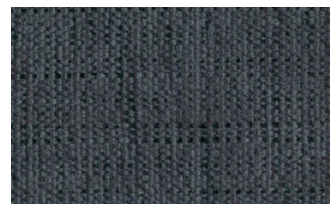
13



14



15



16

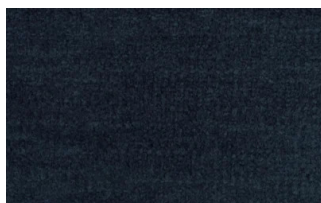
## SUPER

## Hylemt





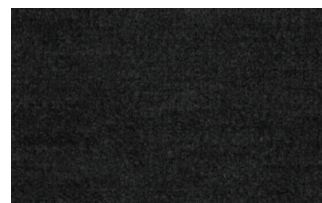
25



102



109



117



121



204



207

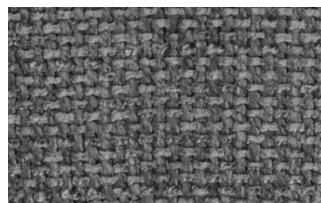
## Axum



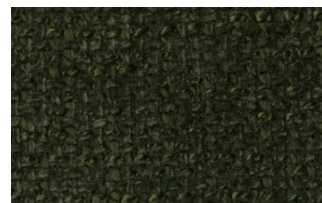
3



11



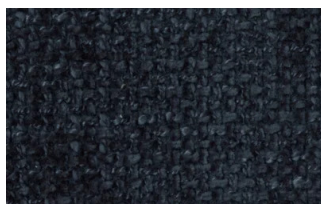
12



18



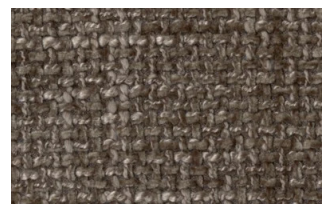
21



23



29

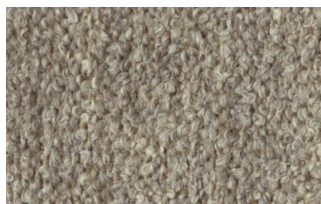


30

## Barnum Unito



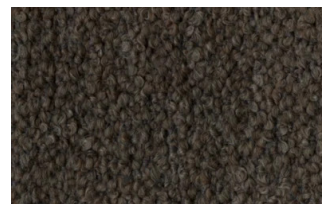
1 bianco



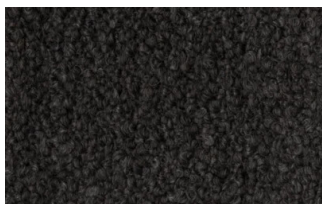
2 corda



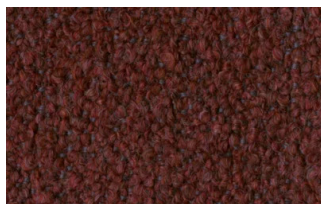
9 bosco



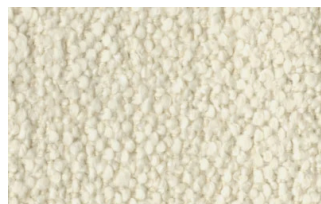
10 piombo



13 lavagna



23 bruciato

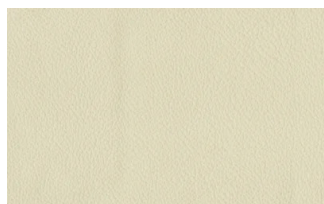


24 lana

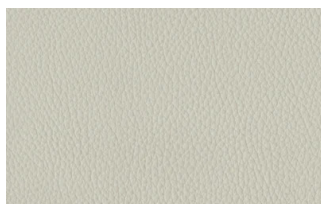
## Leathers

## K LEATHERS

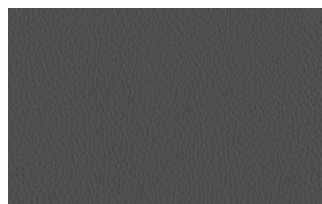
### Leather



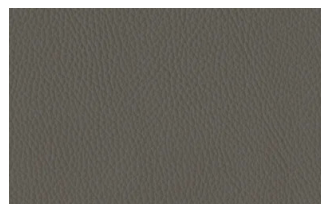
200



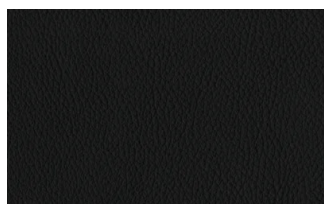
202



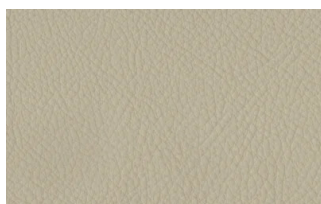
204



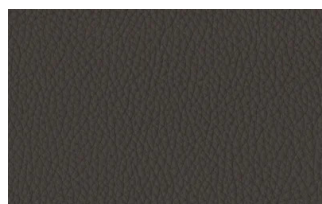
206



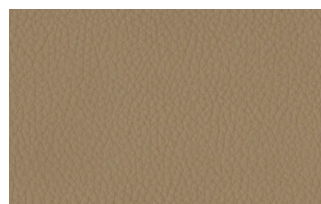
207



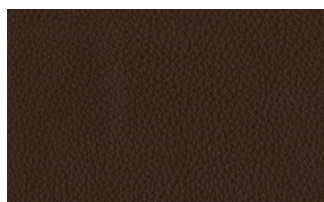
208



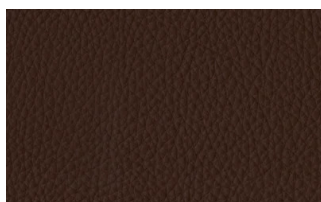
211



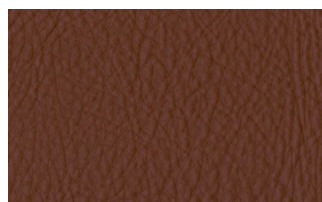
214



217



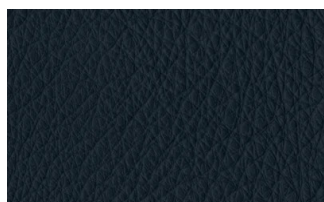
224



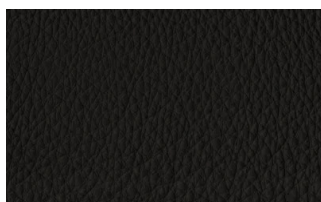
228



234



274



298



301

## W LEATHERS

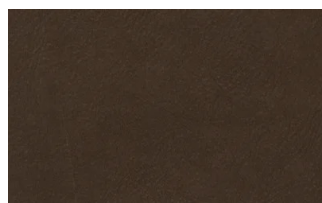
### Nabuk



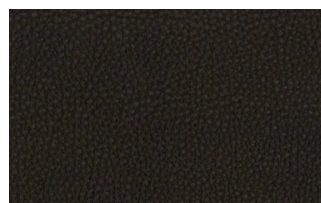
Creta



Camel



marrone

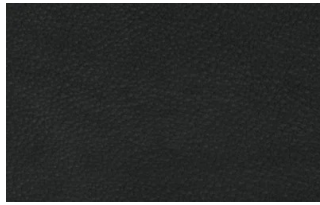


Testa di moro





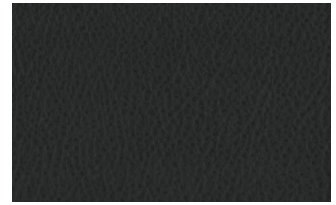
Seppia



Black



Hard leather

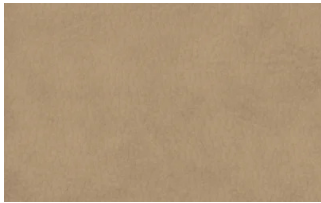


Grigio

## Ecoleathers

### EXTRA ECO-LEATHERS

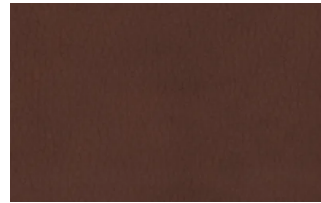
#### Vintage eco-leather



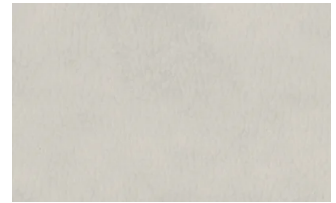
2



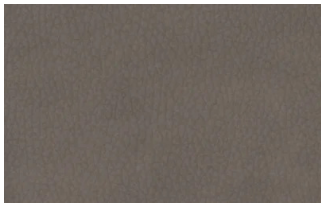
3



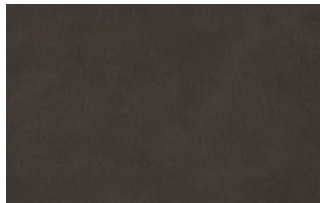
4



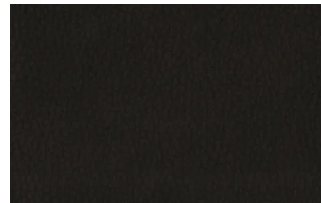
6



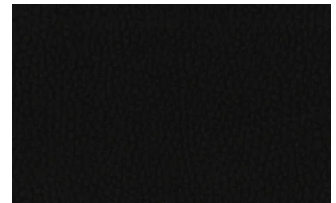
7



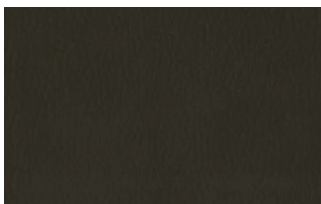
8



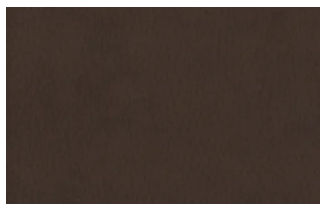
9



14



19



22