

Chairs

Wendy

Wendy is both an indestructible chair and armchair. It has a wooden frame with the special feature that the inner core of the backrest is made of steel, then well padded to make it comfortable and upholstered in fabric, leather or faux leather.



WENDY ARMCHAIR

The Wendy armchair with armrests undergoes a hand-crafting of lateral tilting of the edge of the armrest. It is thanks to such intervention that the latter appears to be formed by a continuous piece of wood, hollowed out. The wide, comfortable seat gives considerable support to the back and leaves much freedom for aesthetics. A different front and back option is also available, as in the picture that combines faux leather in front and woven faux leather in the back of the backrest.



WENDY CHAIR

The Wendy chair is elegant in its traditional line and sleek with its generous backrest. It features square and rigorous shapes, ideal for those who love rationality, perfect even in the smallest environments.



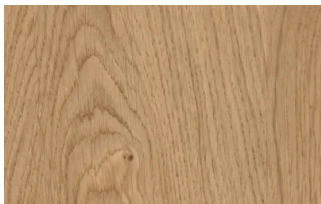
FINISHES

See what finishes are available for Wendy, the same for both chair and armchair, and imagine the perfect version to furnish your space.

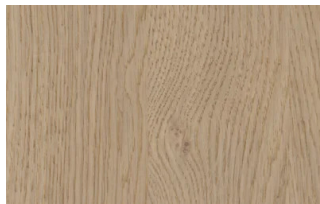
Wood

WOODS 1

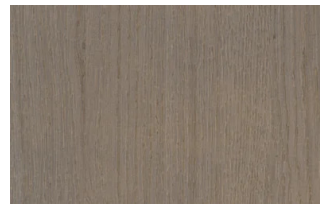
Woods 1



Natural oak



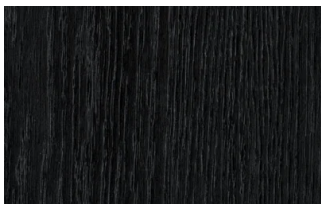
Visone oak



Cenere oak



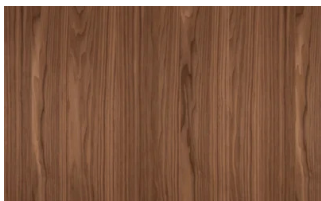
Castoro oak



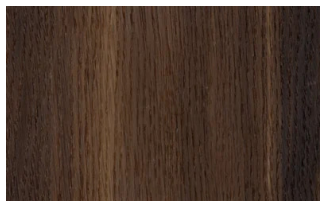
Carbone oak

WOODS 2

Woods 2



Canaletto walnut

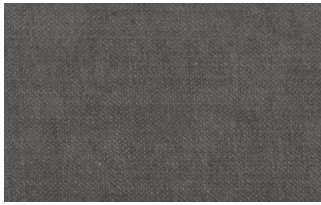


Heat-treated oak

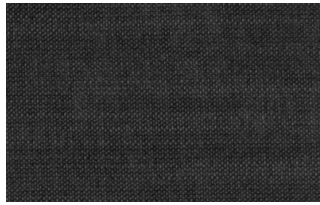
Fabrics

BASIC

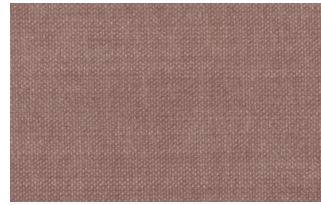
X370



3



4



9



10



23

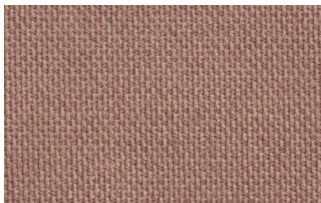


29

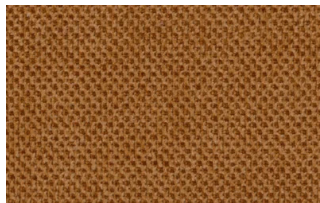


32

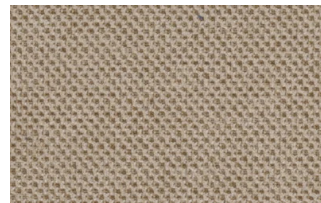
Relax



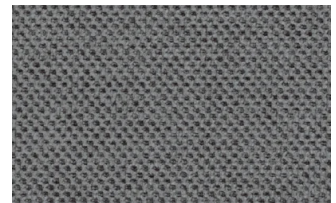
5



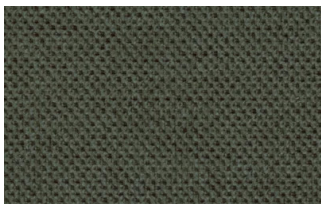
20



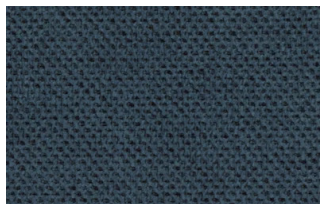
25



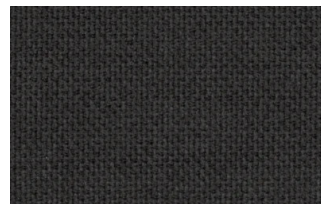
53



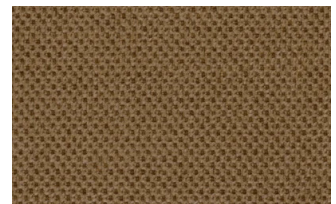
62



66



74



81

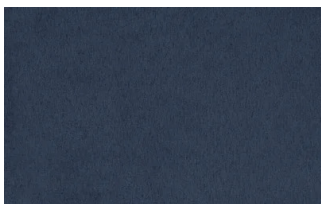


96

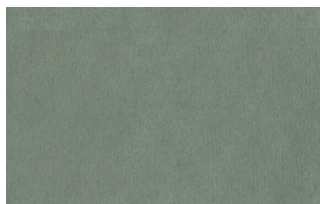


103

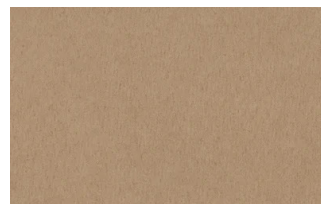
Divina



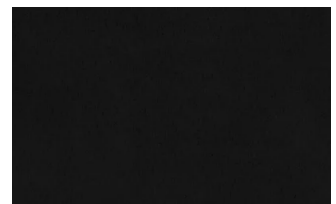
15



19



21



22



34



46



49



50



76



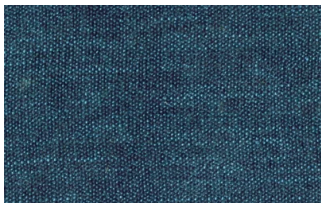
88



561

START

Scoop



6



7



9



25



31



59



104

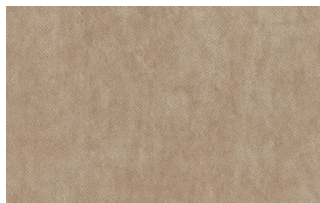


561

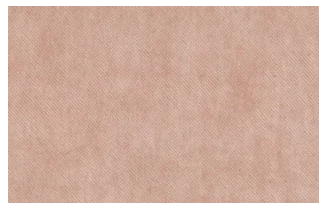
Stropiccio



4



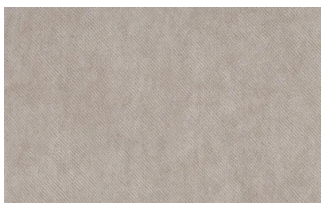
6



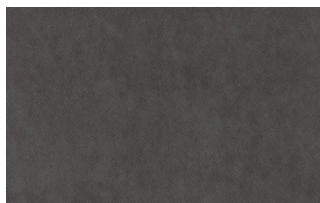
8



17



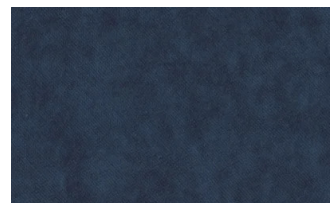
19



20



22

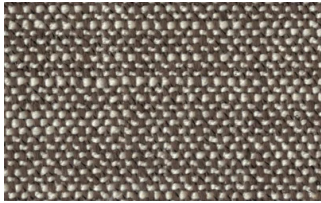


23

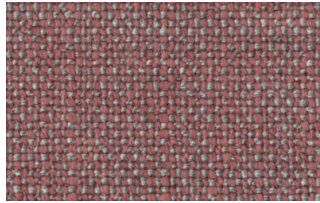


30

Nodone



1302



1307



1308



1309



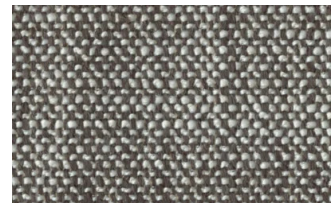
1310



1311

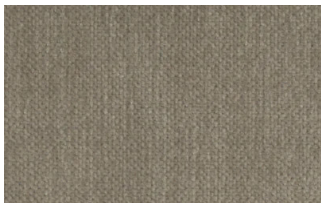


1313

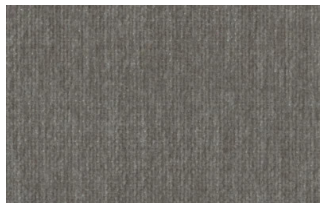


1314

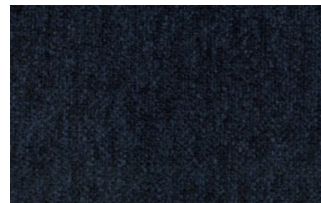
R Flair



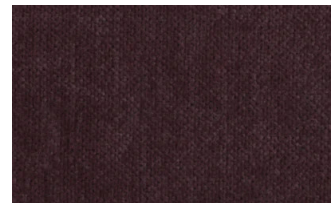
P321-6200-039



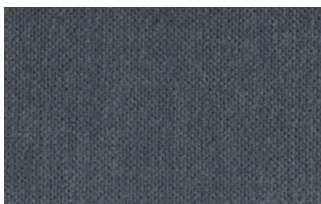
P321-6200-901



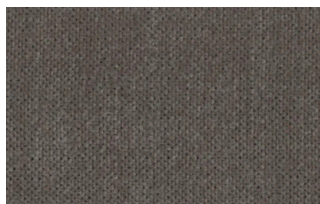
P321-6300-419



P321-6300-503



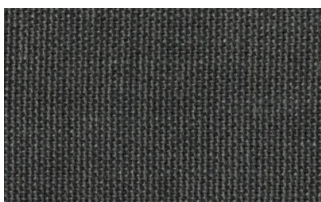
P321-6300-988



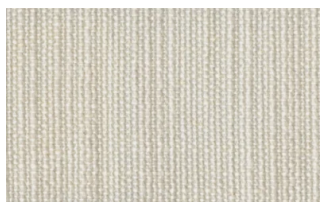
P321-6300-996

EXTRA

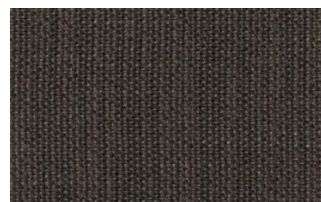
Anice



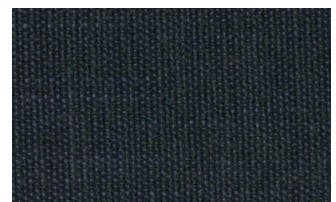
1



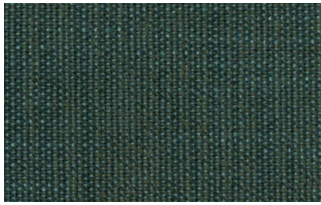
2



3



4



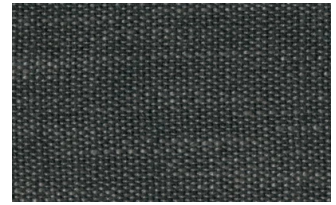
5



6



7

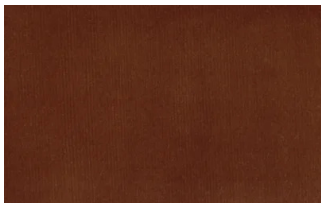


8

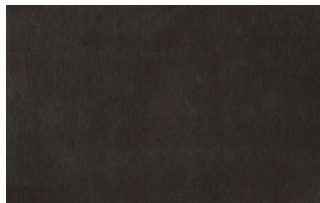


9

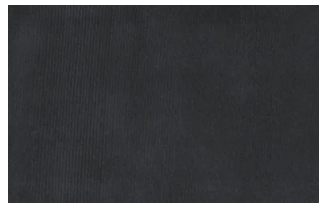
Lovely



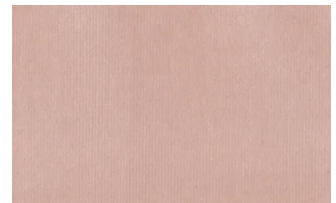
6



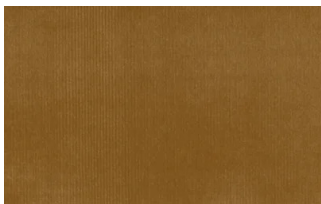
10



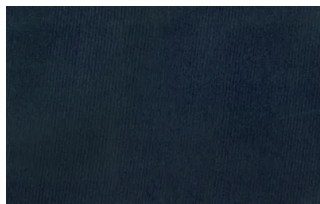
19



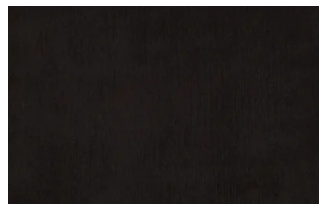
22



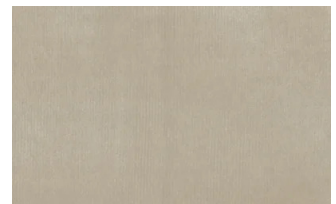
27



31



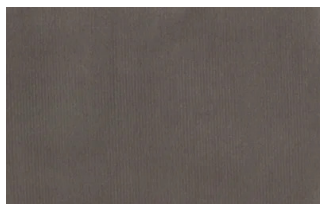
36



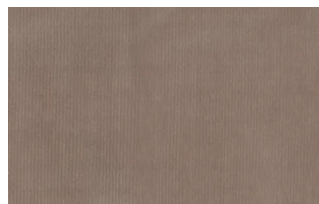
102



113

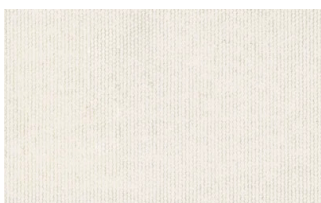


200

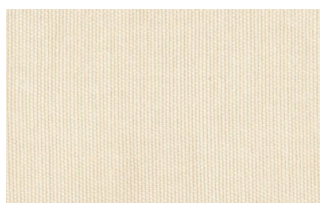


202

Cosme



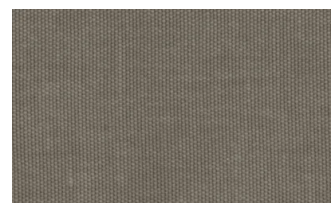
e200



e202



e205



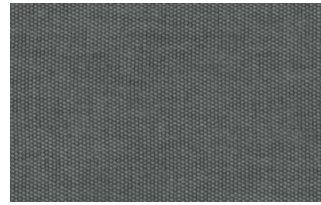
e206



e209



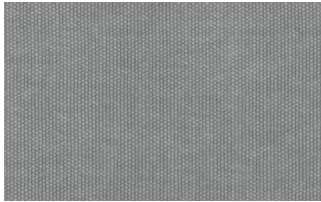
e220



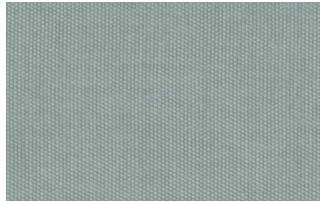
e232



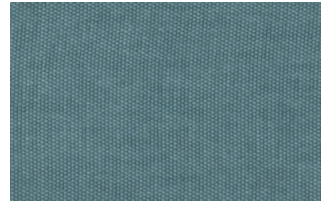
e234



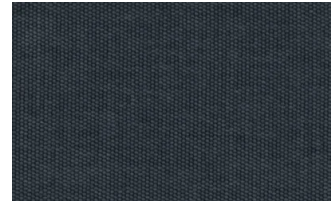
e236



e240

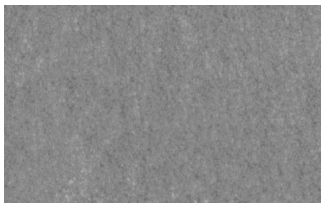


e241

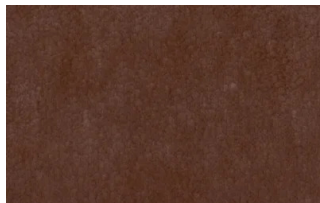


e244

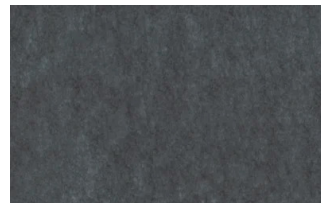
Soda



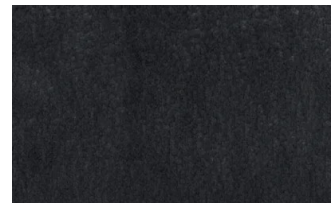
29



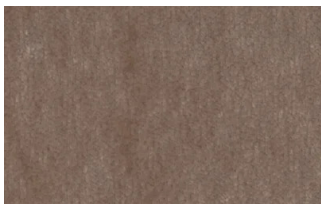
30



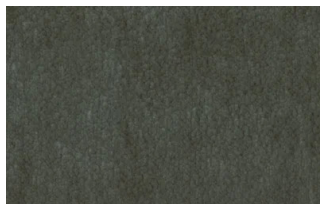
39



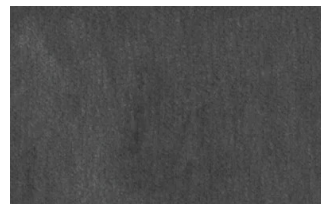
41



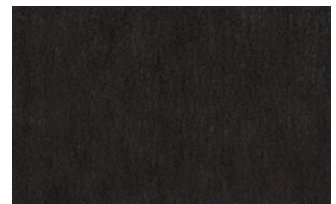
56



62



74



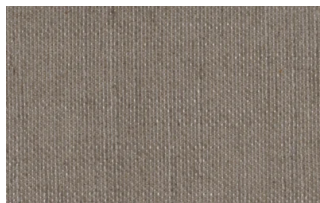
104

LIGHT

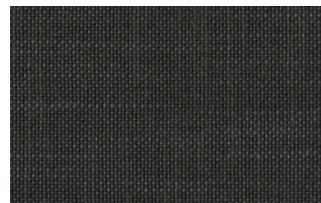
Lima



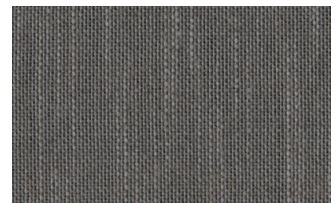
2



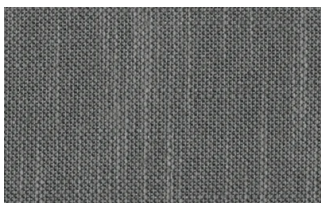
5



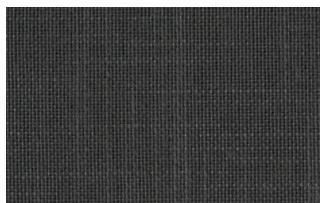
10



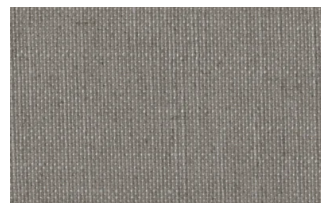
12



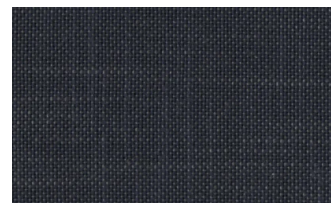
14



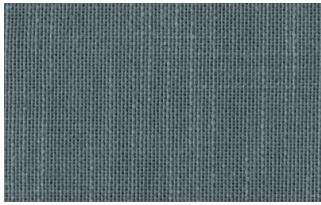
16



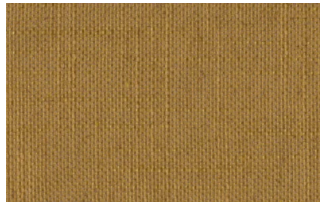
23



29



31



43

Mimi



A3004



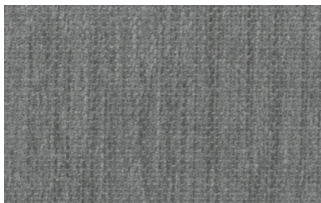
A3005



A3006



A3014



A3018

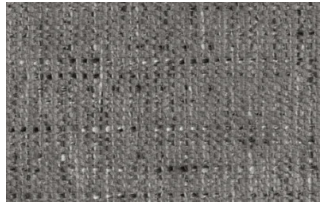


A3023

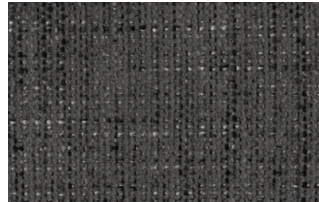
Memphis



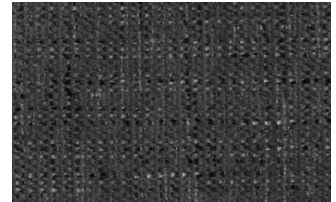
1



6



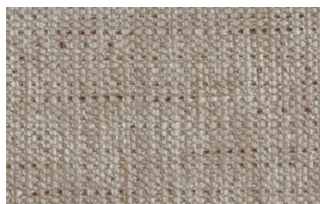
10



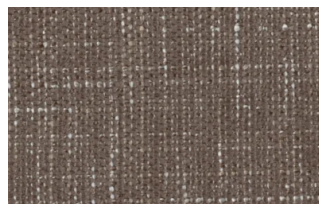
11



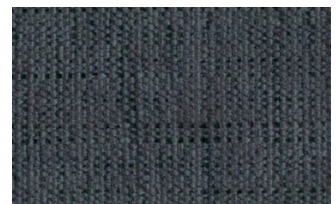
13



14



15



16

SUPER

Hylemt



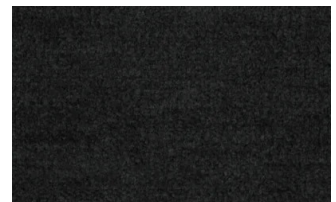
25



102



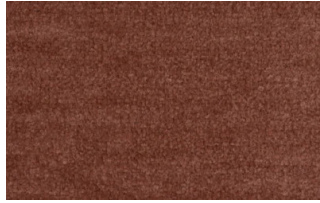
109



117



121



204

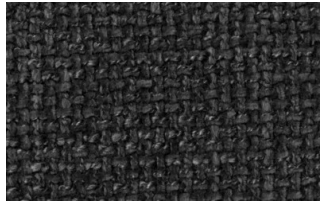


207

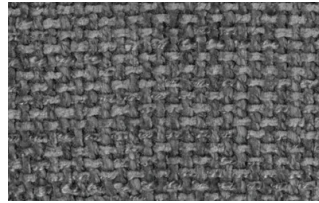
Axum



3



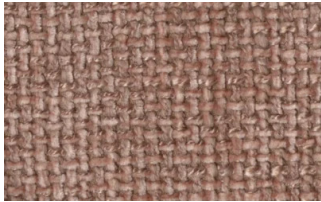
11



12



18



21



23



29



30

Barnum Unito



1 bianco



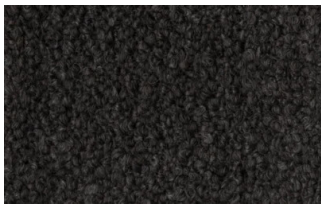
2 corda



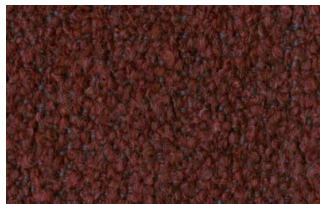
9 bosco



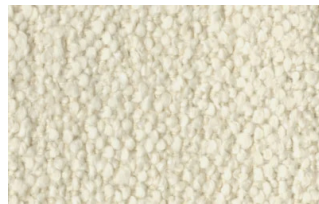
10 piombo



13 lavagna



23 bruciato



24 lana

Leathers

K LEATHERS

Leather



200



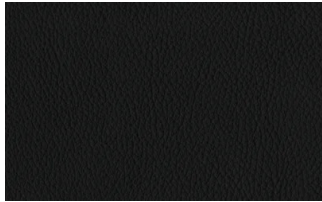
202



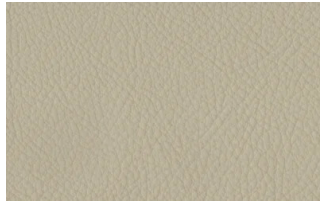
204



206



207



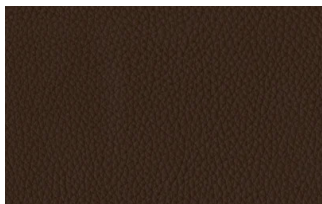
208



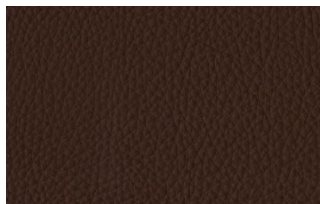
211



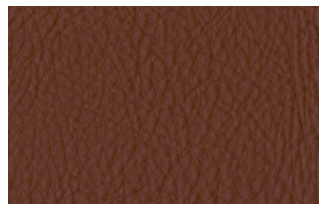
214



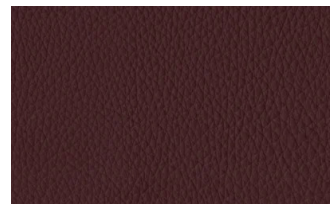
217



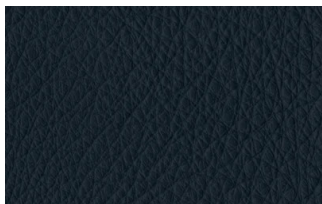
224



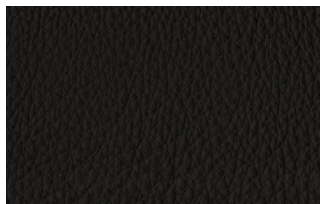
228



234



274



298



301

W LEATHERS

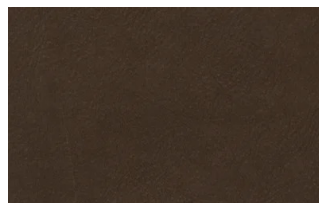
Nabuk



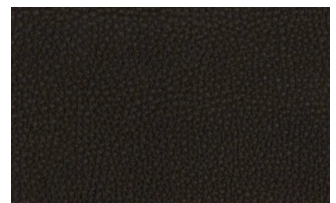
Creta



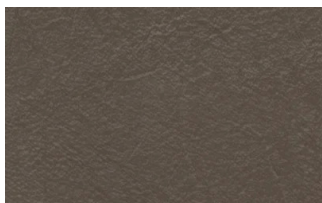
Camel



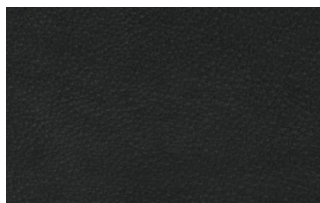
marrone



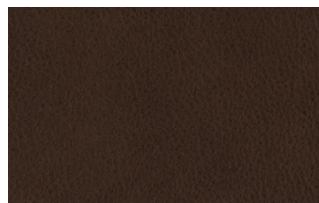
Testa di moro



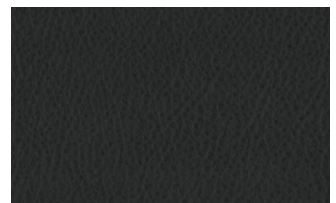
Seppia



Black



Hard leather



Grigio

Ecoleathers

EXTRA ECO-LEATHERS

Vintage eco-leather



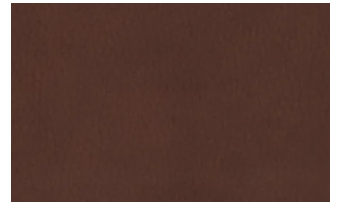
2



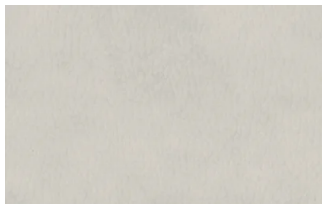
3



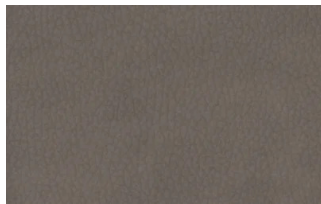
3 intreccio



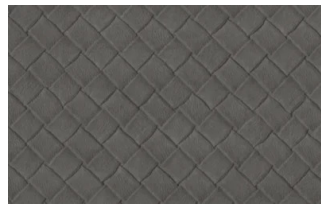
4



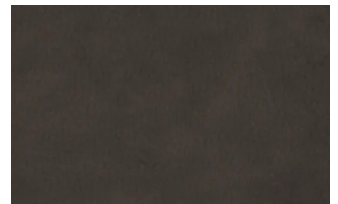
6



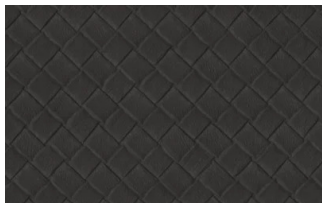
7



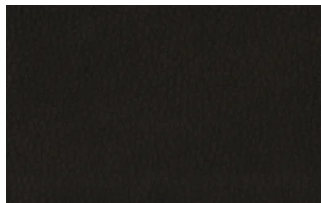
7 intreccio



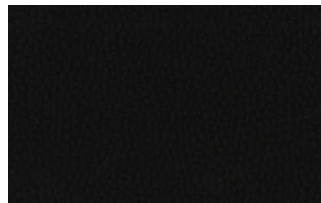
8



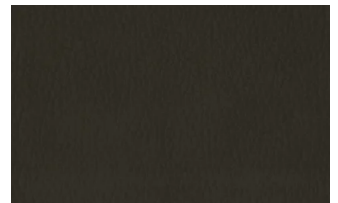
8 intreccio



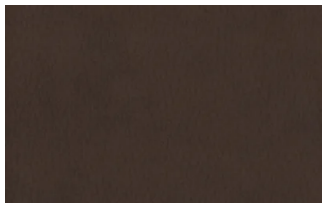
9



14



19



22