

Chairs

Hull

It's chair or armchair as you wish, with the seat resting on the wooden frame, to be stained in the countless finishes in Dallagnese's range. Our attention to craftsmanship is emphasized in the Hull armchair, with its hand-sewn leather shell.



HULL ARMCHAIR

An elegant shell wraps the fabric, leather or faux leather seat and transforms it into a full-fledged armchair, including armrests. It is made of genuine leather, in different color shades, 100% handcrafted. In fact, its parts are made by a tailor who specializes in leather shoes and then sewn together by hand and riveted.



HULL CHAIR

The simplest version of this Dallagnese product is the Hull chair option, comfortable and essential. The seat, resting on the wooden frame, can be upholstered in fabric, leather or faux leather with visible stitching and is also perfect for furnishing rooms with small spaces.



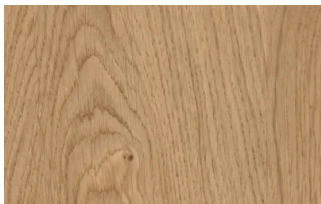
FINISHES

Check available finishes for Hull chair and armchair now. Remember that the back of the backrest may also be different from the front, both in material and finish.

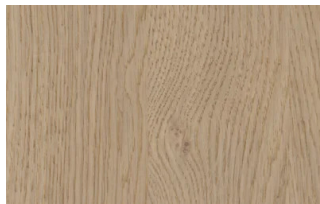
Wood

WOODS 1

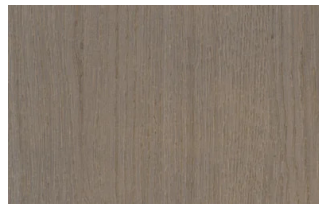
Woods 1



Natural oak



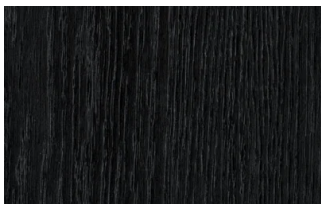
Visone oak



Cenere oak



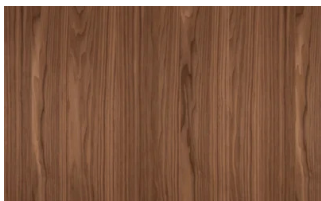
Castoro oak



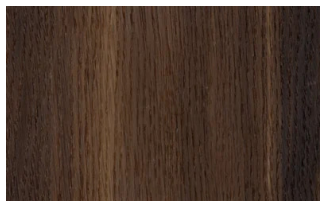
Carbone oak

WOODS 2

Woods 2



Canaletto walnut

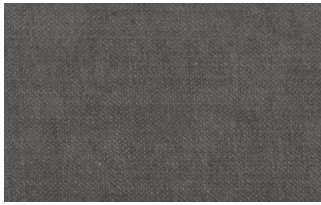


Heat-treated oak

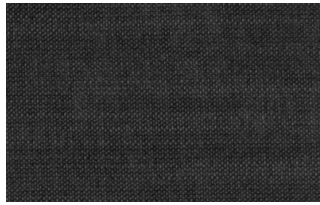
Fabrics

BASIC

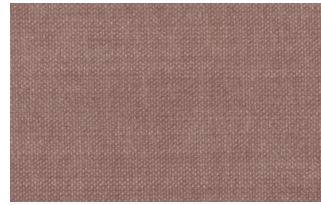
X370



3



4



9



10



23

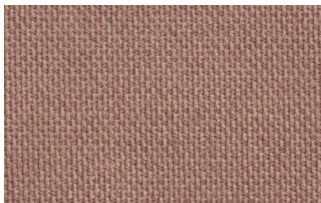


29

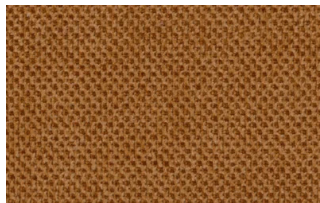


32

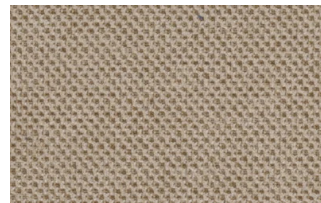
Relax



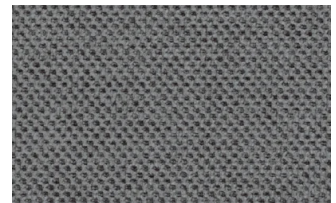
5



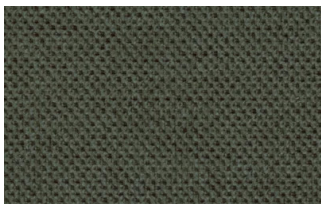
20



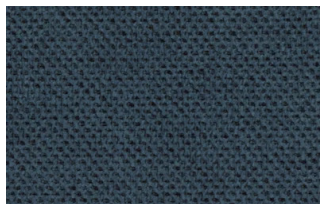
25



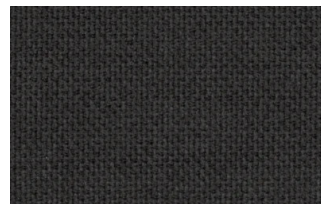
53



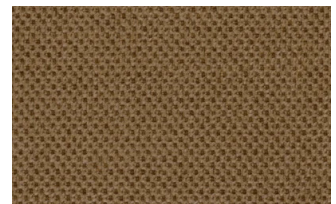
62



66



74



81

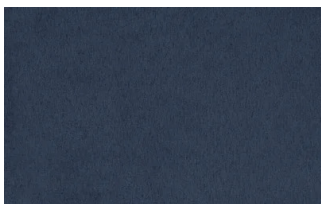


96

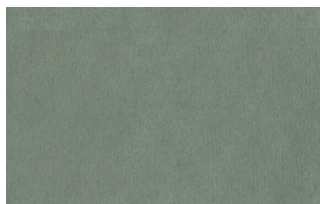


103

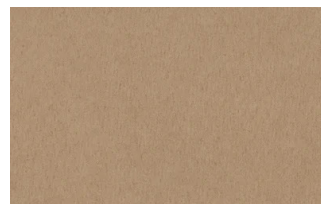
Divina



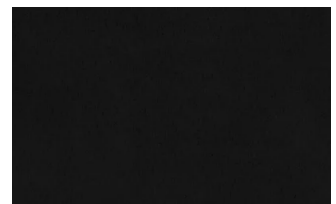
15



19



21



22



34



46



49



50



76



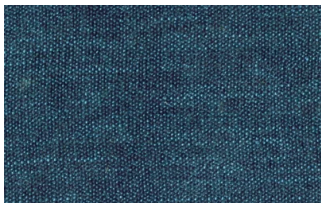
88



561

START

Scoop



6



7



9



25



31



59



104

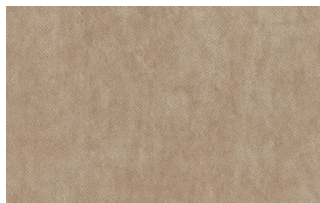


561

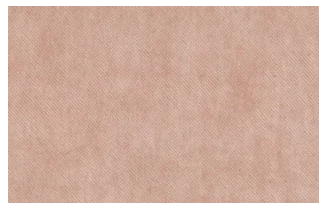
Stropiccio



4



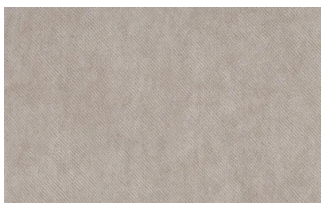
6



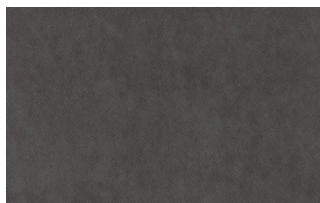
8



17



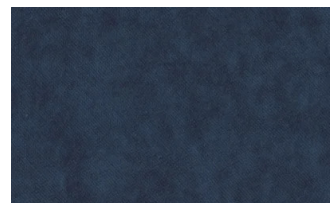
19



20



22

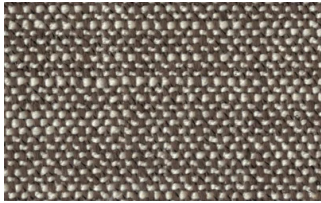


23

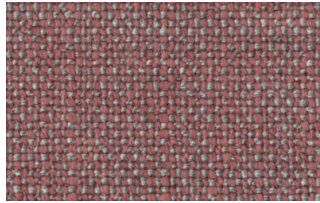


30

Nodone



1302



1307



1308



1309



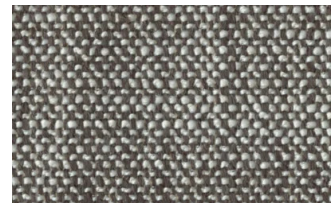
1310



1311

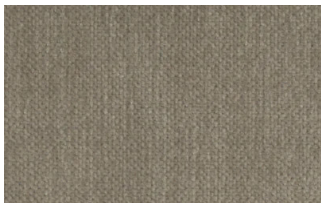


1313

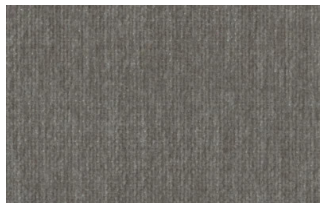


1314

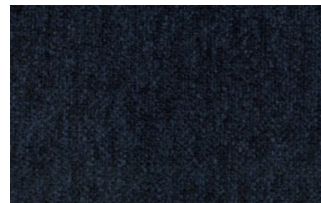
R Flair



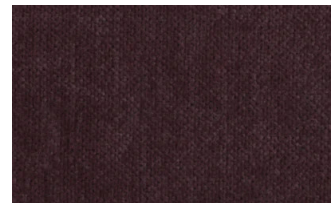
P321-6200-039



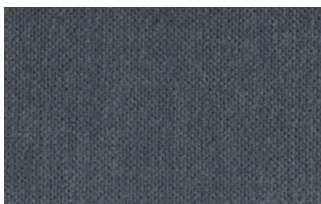
P321-6200-901



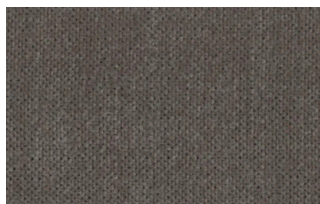
P321-6300-419



P321-6300-503



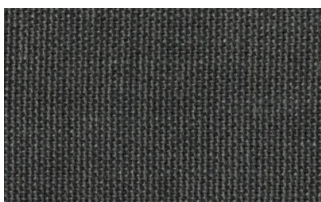
P321-6300-988



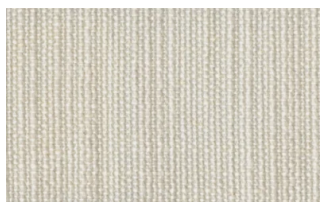
P321-6300-996

EXTRA

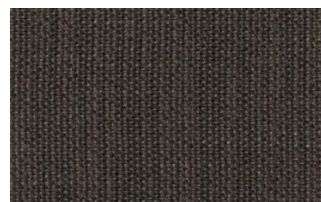
Anice



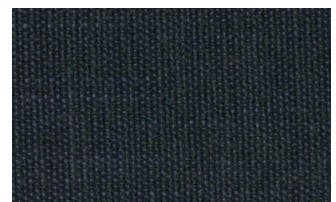
1



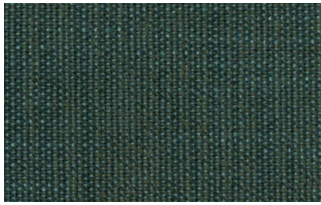
2



3



4



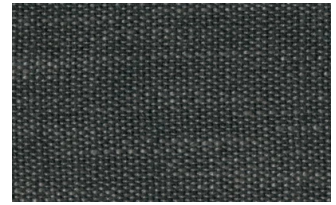
5



6



7

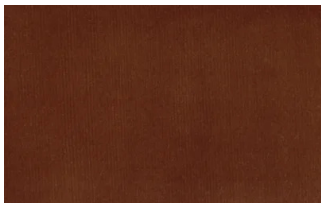


8

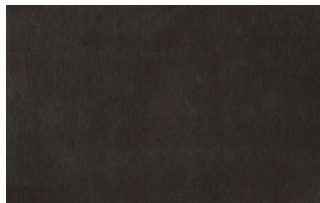


9

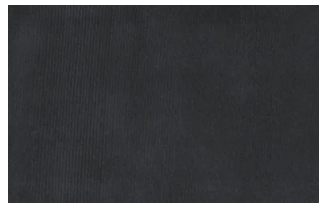
Lovely



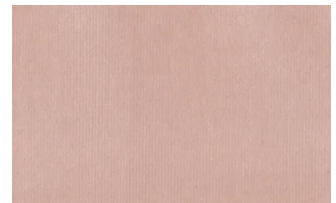
6



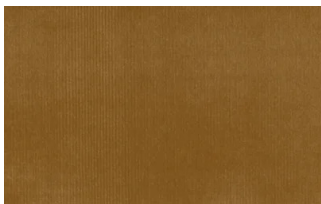
10



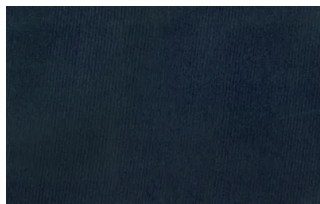
19



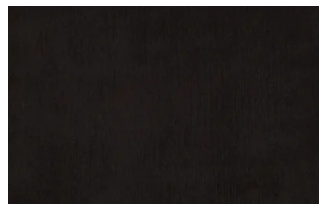
22



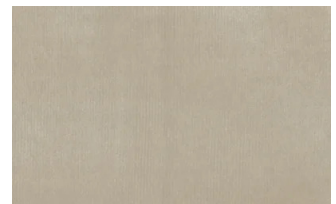
27



31



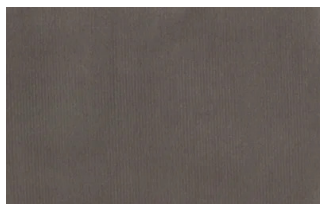
36



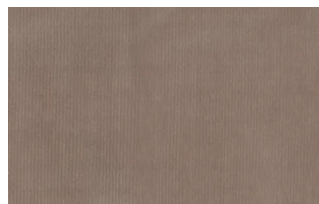
102



113

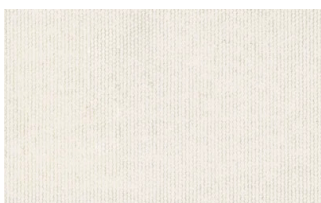


200

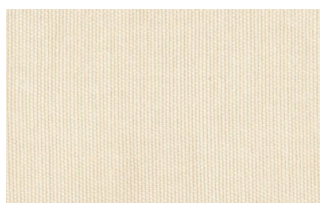


202

Cosme



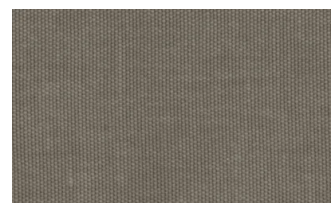
e200



e202



e205



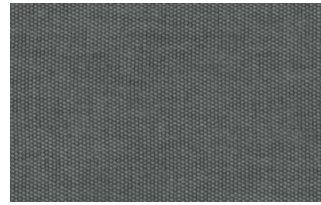
e206



e209



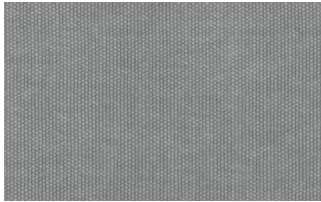
e220



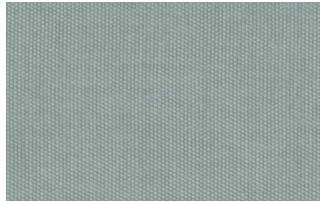
e232



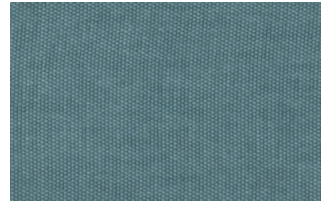
e234



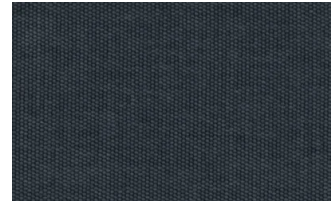
e236



e240

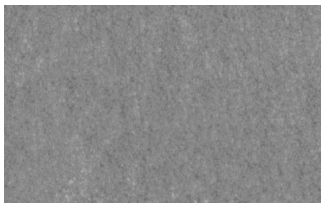


e241

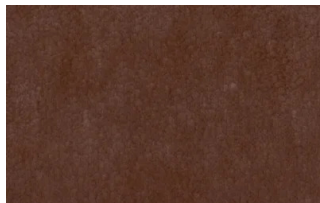


e244

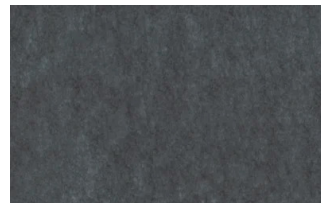
Soda



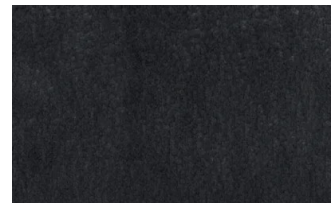
29



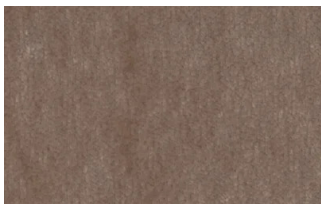
30



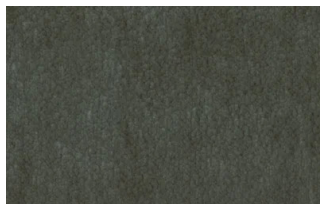
39



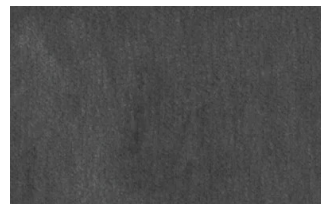
41



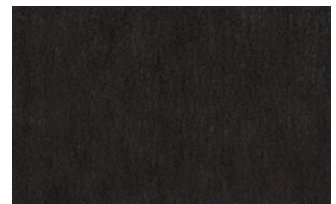
56



62



74



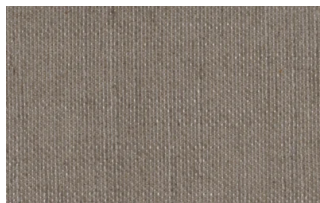
104

LIGHT

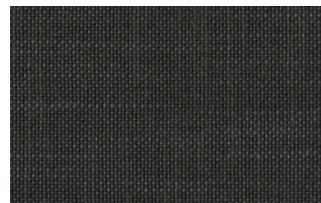
Lima



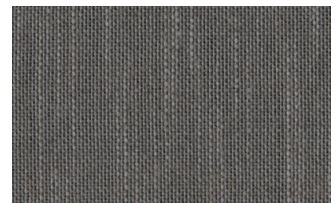
2



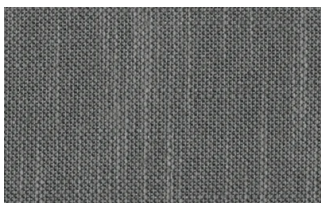
5



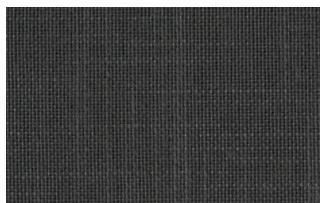
10



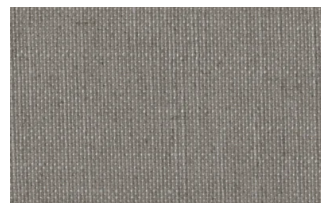
12



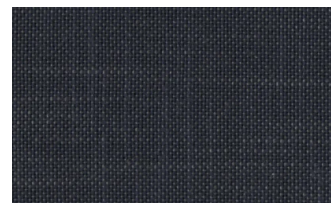
14



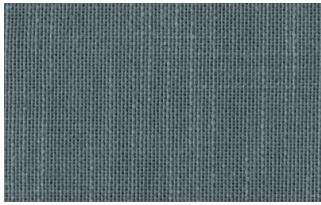
16



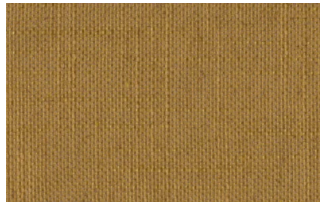
23



29



31



43

Mimi



A3004



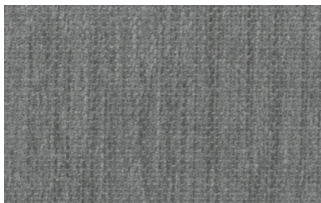
A3005



A3006



A3014



A3018

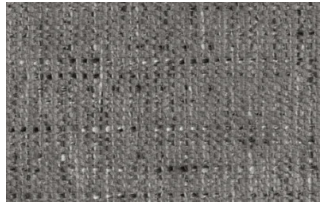


A3023

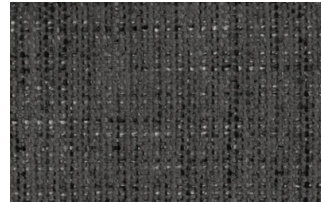
Memphis



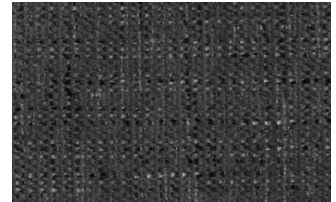
1



6



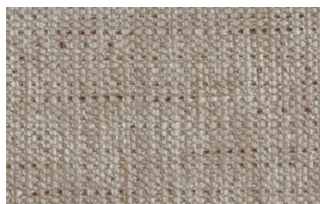
10



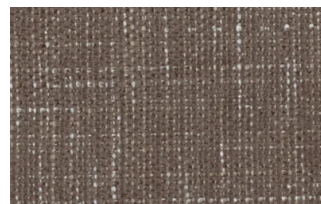
11



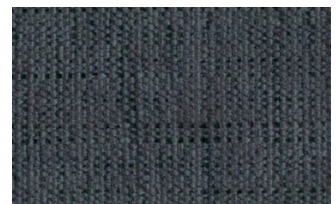
13



14



15



16

SUPER

Hylemt



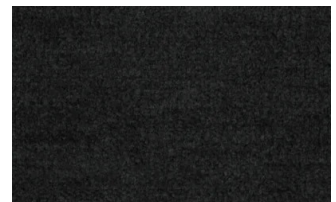
25



102



109



117



121



204

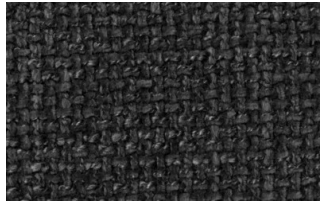


207

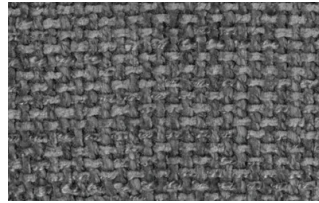
Axum



3



11



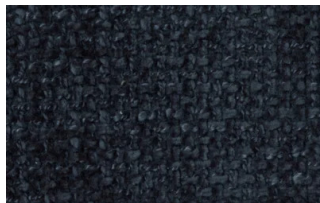
12



18



21



23



29



30

Barnum Unito



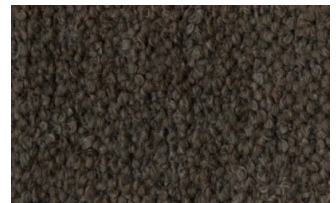
1 bianco



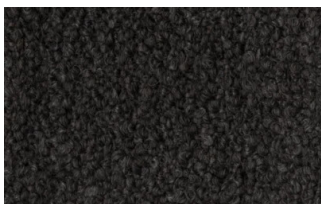
2 corda



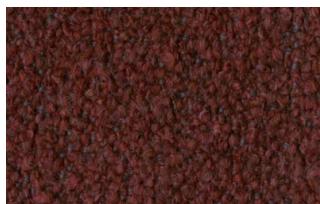
9 bosco



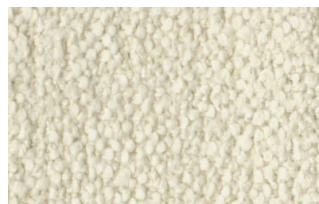
10 piombo



13 lavagna



23 bruciato



24 lana

Leathers

K LEATHERS

Leather



200



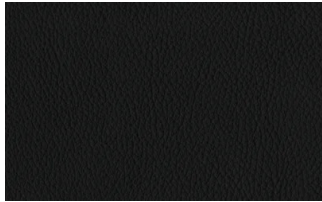
202



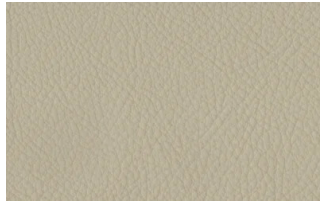
204



206



207



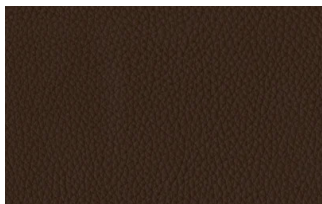
208



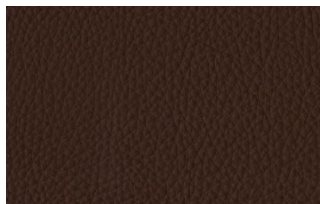
211



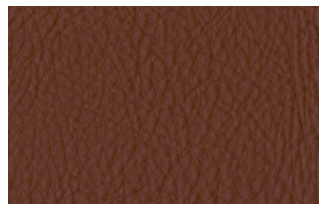
214



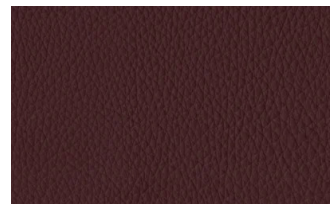
217



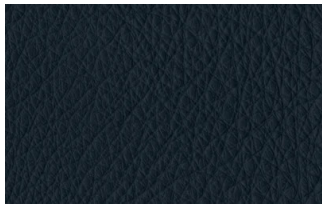
224



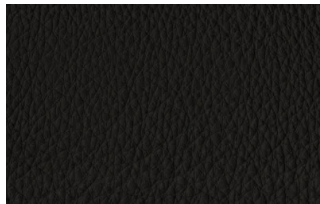
228



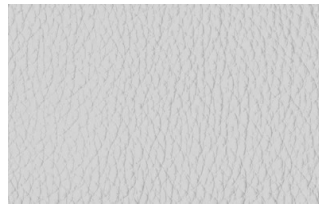
234



274



298



301

W LEATHERS

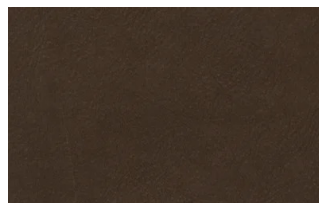
Nabuk



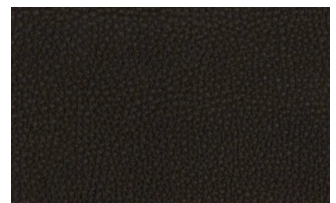
Creta



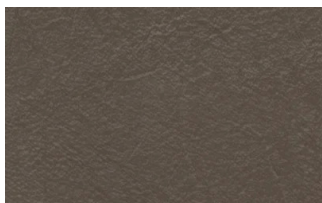
Camel



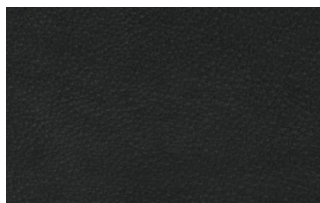
marrone



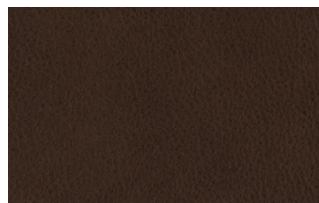
Testa di moro



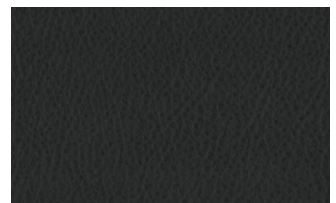
Seppia



Black



Hard leather



Grigio

Ecoleathers

EXTRA ECO-LEATHERS

Vintage eco-leather



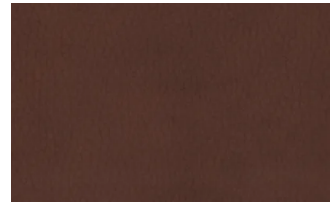
2



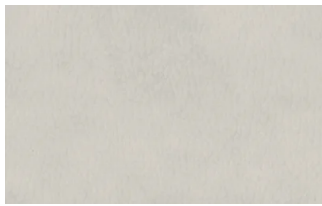
3



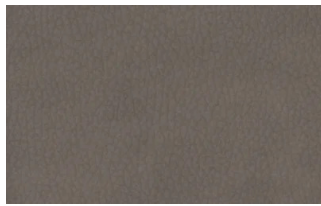
3 intreccio



4



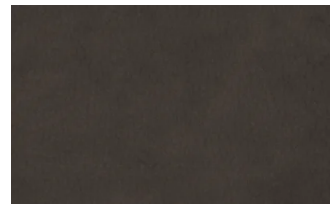
6



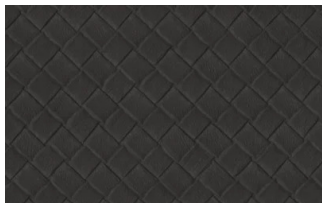
7



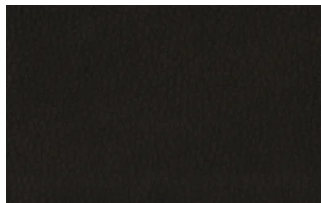
7 intreccio



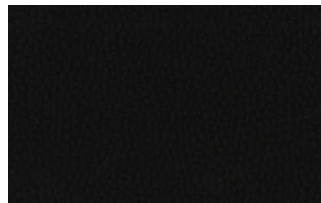
8



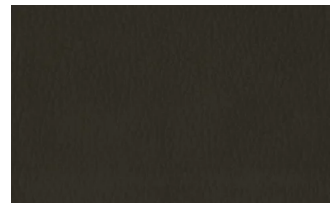
8 intreccio



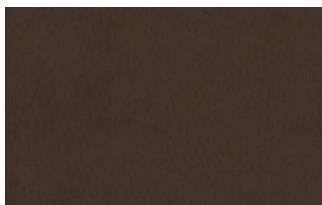
9



14



19

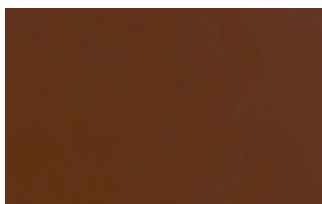


22

Hard leathers

HARD LEATHERS

Hard leathers



naturale



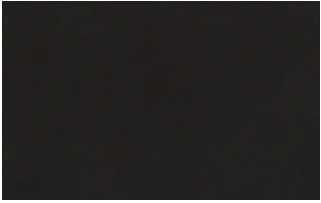
Beige



Corda



Grigio



Testa di moro



Black