

Chairs

Float

The detail from the handcrafted eye of this mighty ash chair is in the union of seat and frame. It is molded into dynamic, sleek lines with a light touch. And the seat floats.



HANDCRAFTED ERGONOMIC CHAIR

Float is a handcrafted wooden chair. Softening and rounding the shapes, especially at the joints or in making the leg oval, is in fact an exclusively handcrafted activity, in line with the quality level set for this Dallagnese design. Each Float is not only made, but also rechecked, by hand.



DETAILS FOR A DURABLE CHAIR

Taking quality materials for granted, much depends on the workmanship. Float's seat and back can be upholstered in fabric, leather or faux leather with stitching riveted twice for durability. The ash frame can be lacquered in a variety of wood finishes with an electrostatic coating. It is typical of the automotive industry, highly resistant to corrosion, with lower paint consumption and flawless, streak-free results.



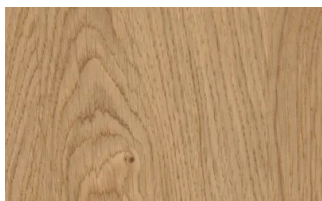
FINISHES

Discover all the available finishes for fabrics, leathers and faux leather that can be used to dress your Float as well as wood essence finishes for painting its ash frame.

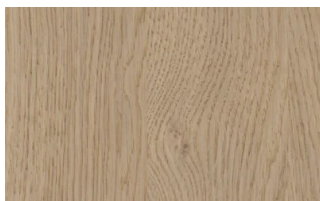
Wood

WOODS 1

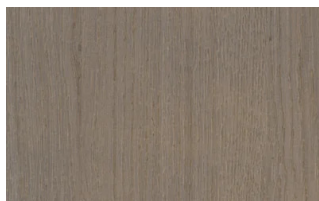
Woods 1



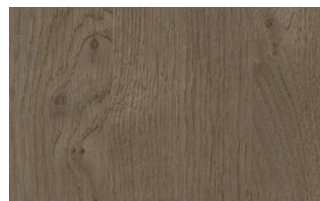
Natural oak



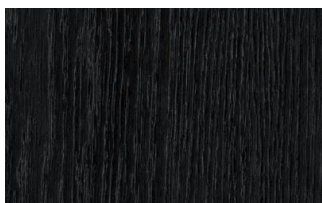
Visone oak



Cenere oak



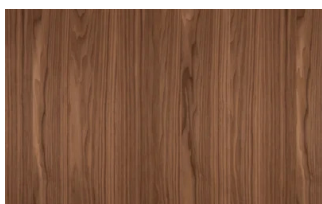
Castoro oak



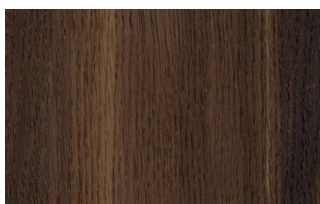
Carbone oak

WOODS 2

Woods 2



Canaletto walnut

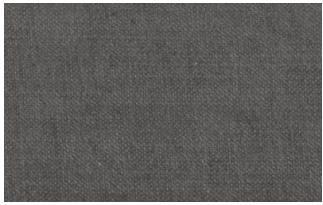


Heat-treated oak

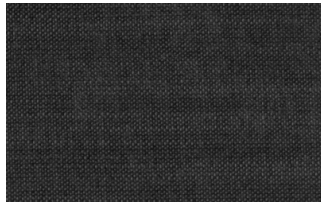
Fabrics

BASIC

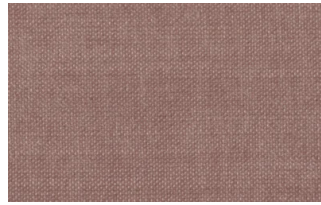
X370



3



4



9



10



23

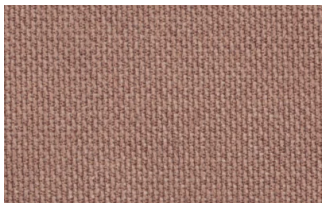


29

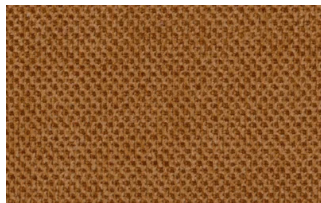


32

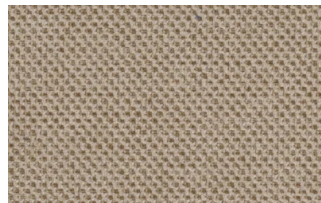
Relax



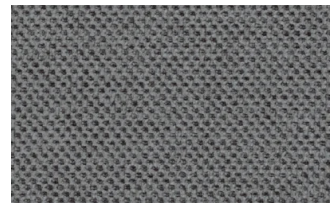
5



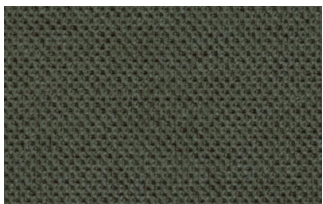
20



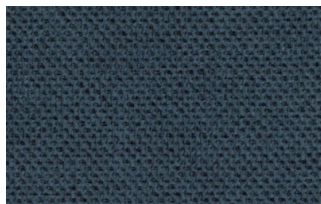
25



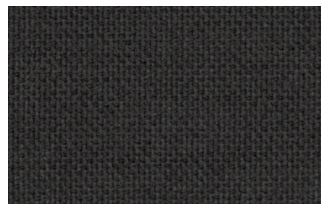
53



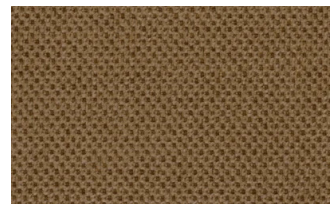
62



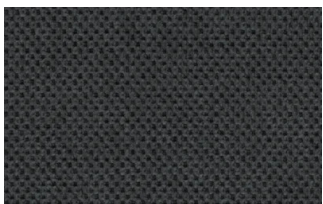
66



74



81

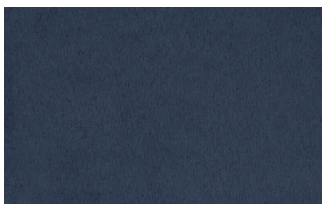


96

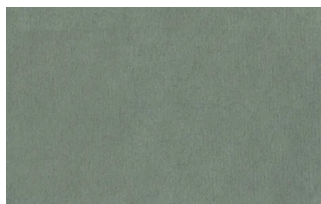


103

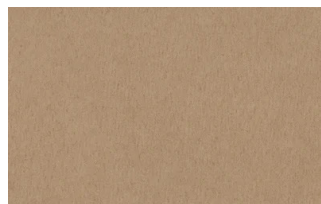
Divina



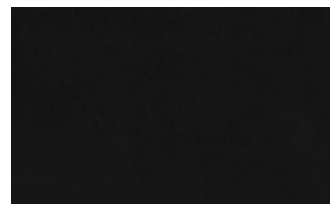
15



19



21



22



34



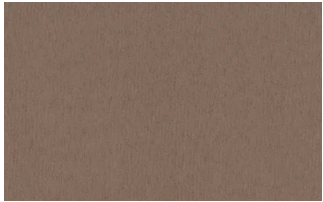
46



49



50



76



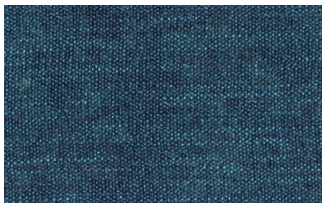
88



561

START

Scoop



6



7



9



25



31



59



104

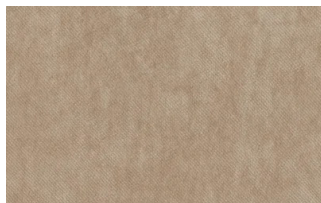


561

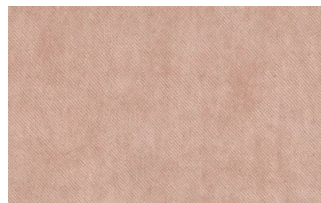
Stropiccio



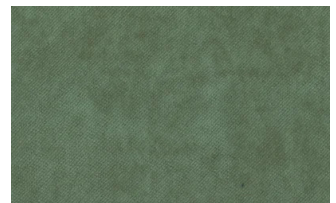
4



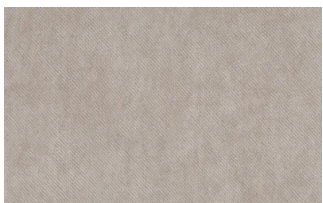
6



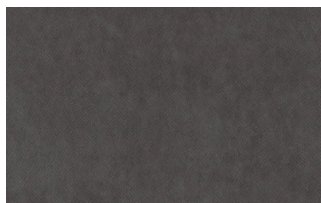
8



17



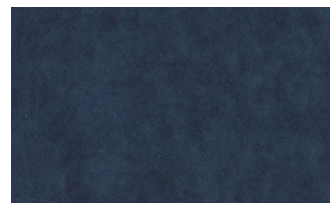
19



20



22

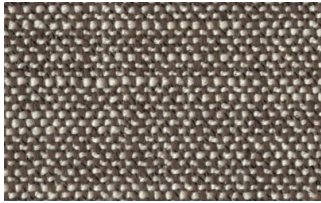


23

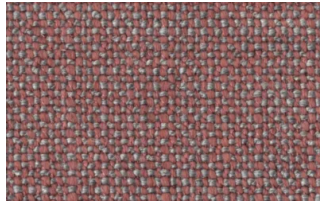


30

Nodone



1302



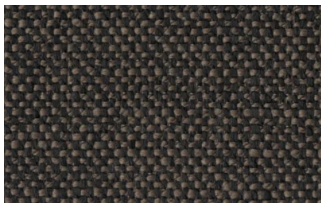
1307



1308



1309



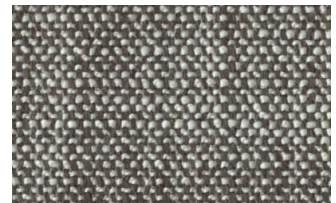
1310



1311

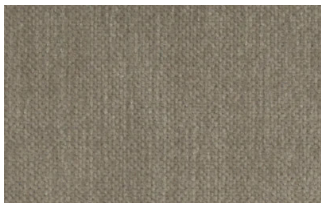


1313

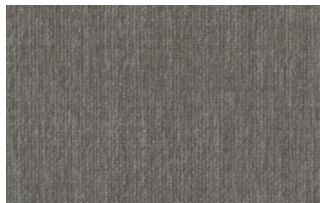


1314

R Flair



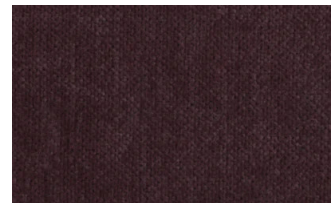
P321-6200-039



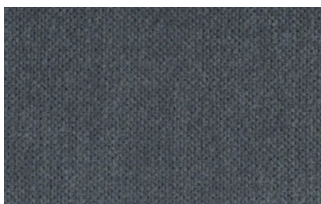
P321-6200-901



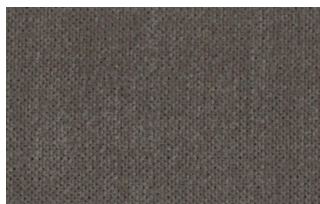
P321-6300-419



P321-6300-503



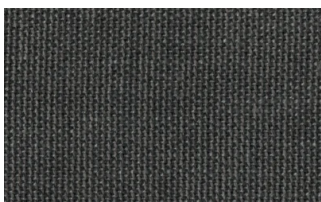
P321-6300-988



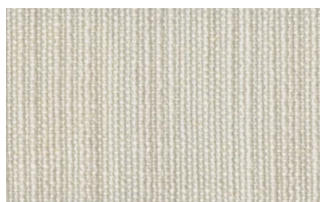
P321-6300-996

EXTRA

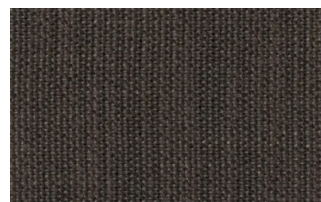
Anice



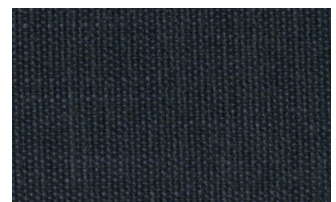
1



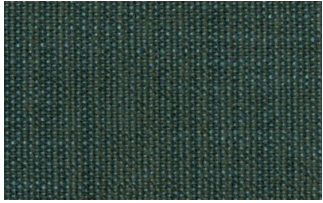
2



3



4



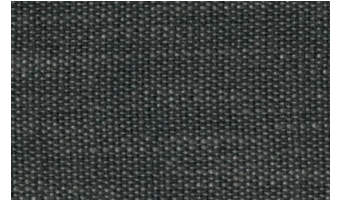
5



6



7

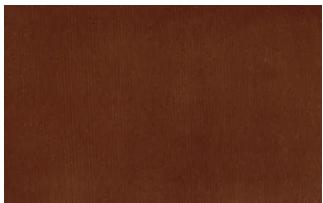


8

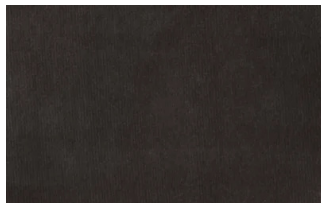


9

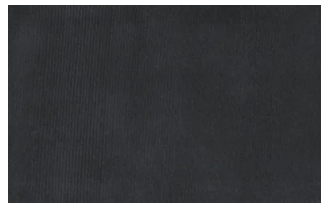
Lovely



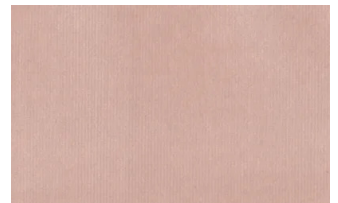
6



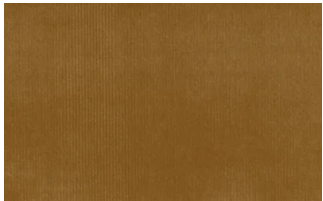
10



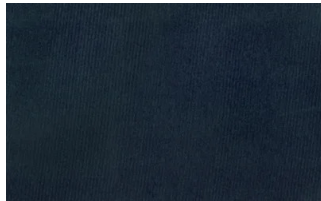
19



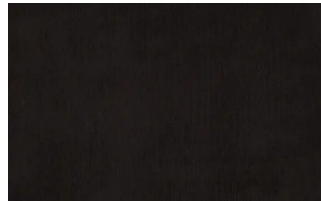
22



27



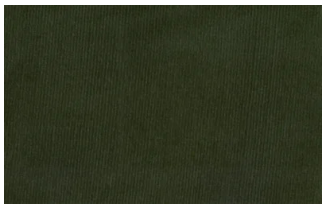
31



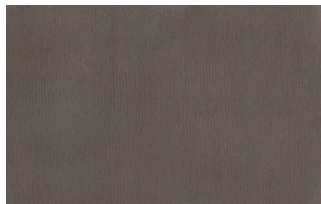
36



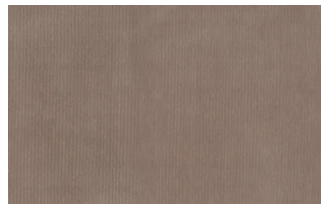
102



113



200

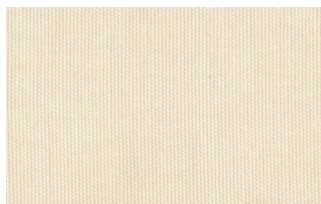


202

Cosme



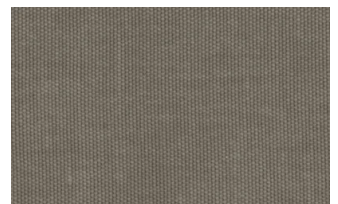
e200



e202



e205



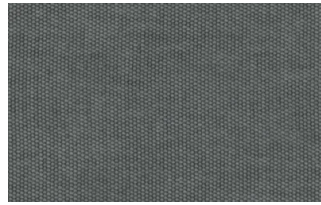
e206



e209



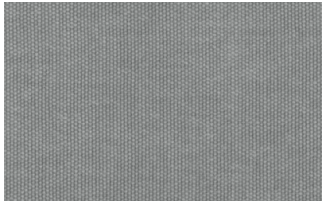
e220



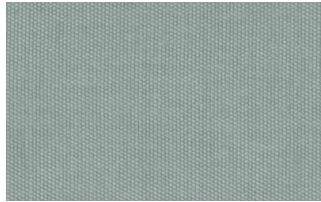
e232



e234



e236



e240

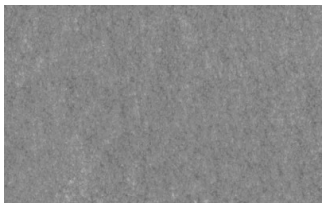


e241

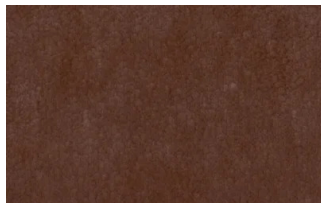


e244

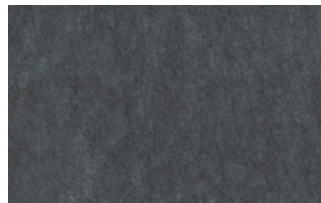
Soda



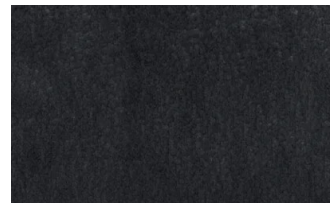
29



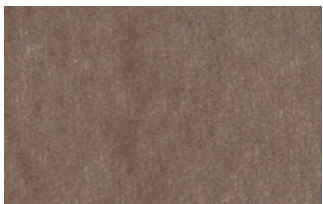
30



39



41



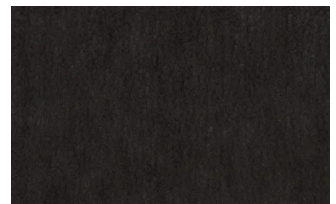
56



62



74



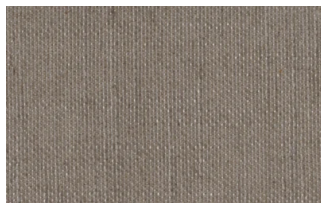
104

LIGHT

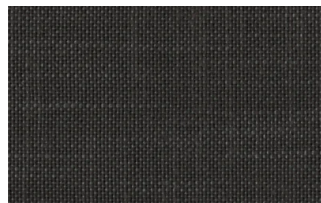
Lima



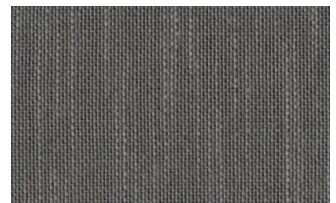
2



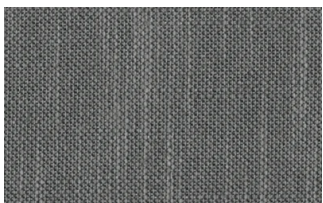
5



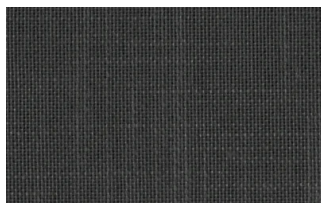
10



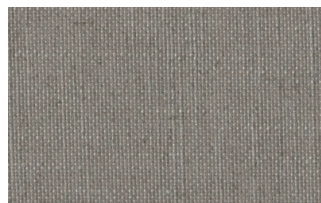
12



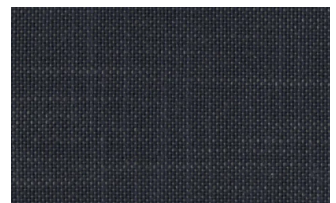
14



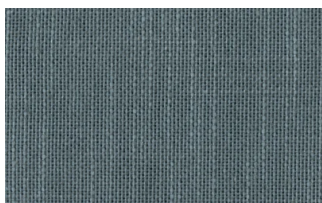
16



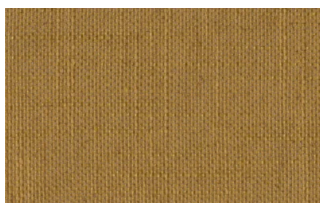
23



29



31



43

Mimi



A3004



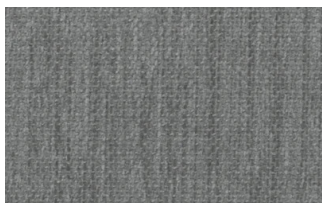
A3005



A3006



A3014

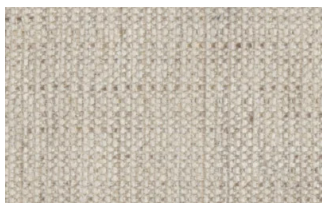


A3018

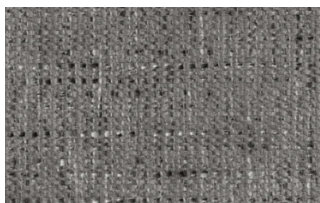


A3023

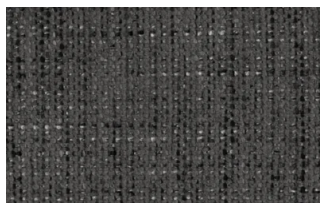
Memphis



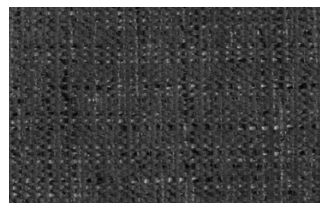
1



6



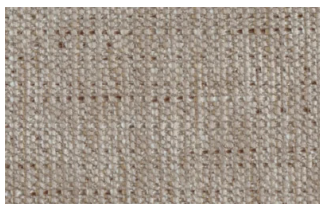
10



11



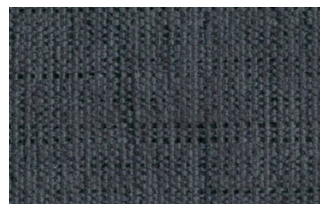
13



14



15



16

SUPER

Hylemt



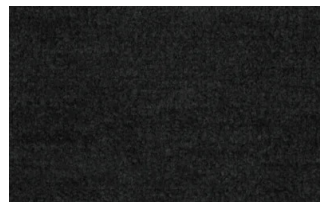
25



102



109



117



121



204



207

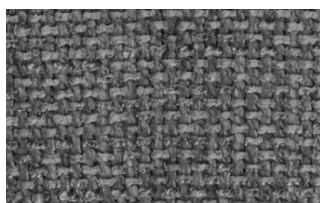
Axum



3



11



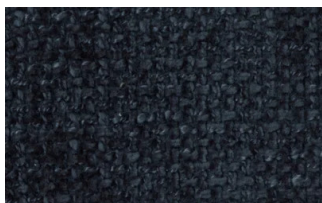
12



18



21



23



29

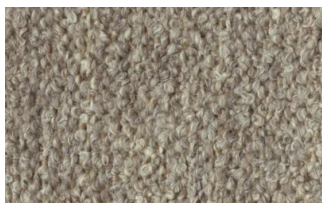


30

Barnum Unito



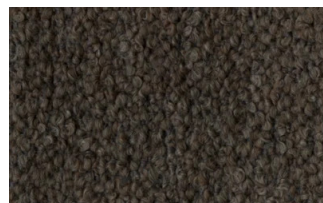
1 bianco



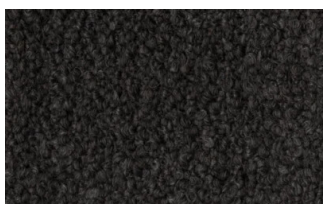
2 corda



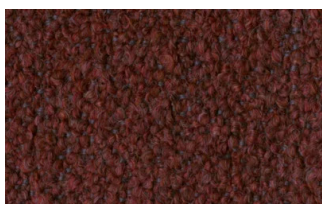
9 bosco



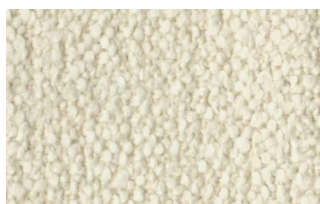
10 piombo



13 lavagna



23 bruciato

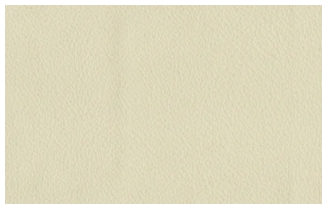


24 lana

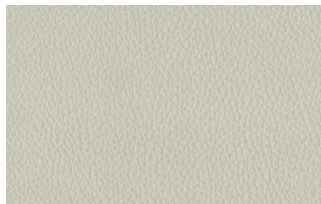
Leathers

K LEATHERS

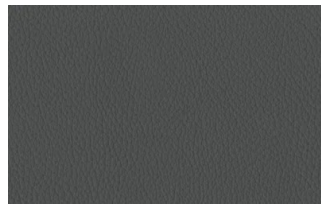
Leather



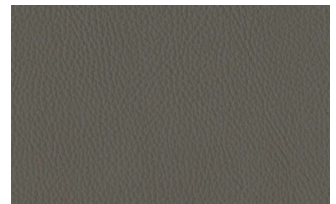
200



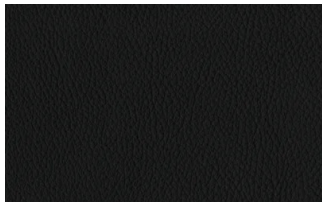
202



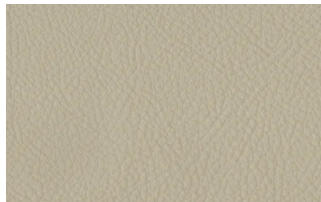
204



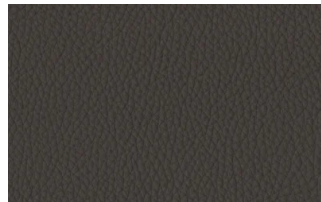
206



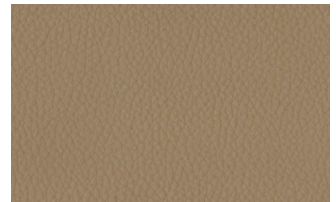
207



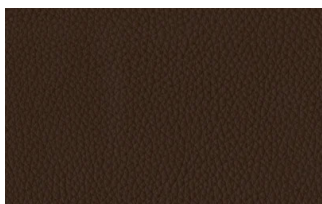
208



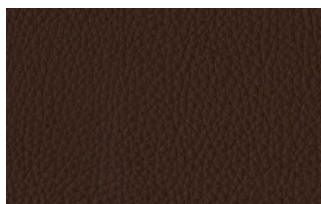
211



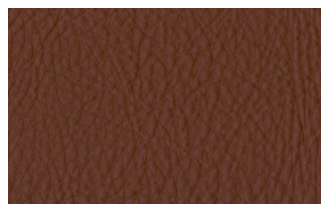
214



217



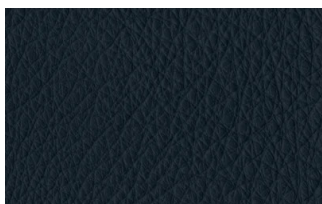
224



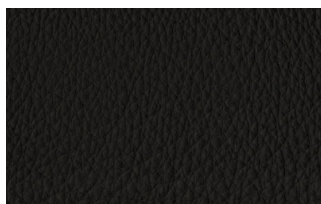
228



234



274



298



301

W LEATHERS

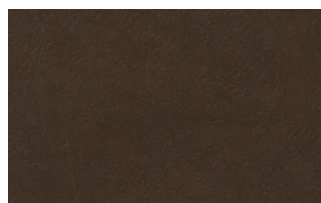
Nabuk



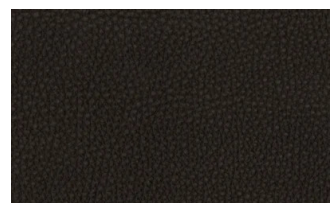
Creta



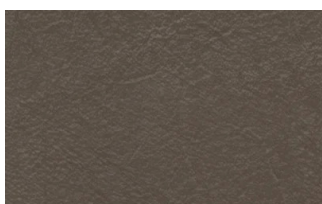
Camel



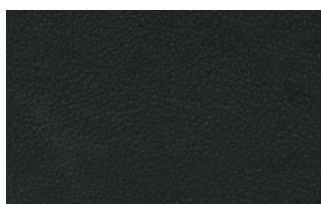
marrone



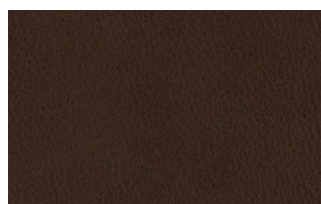
Testa di moro



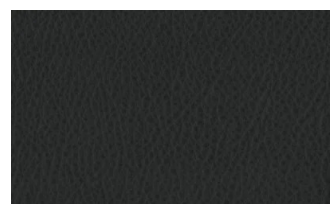
Seppia



Black



Hard leather

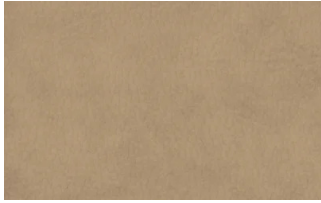


Grigio

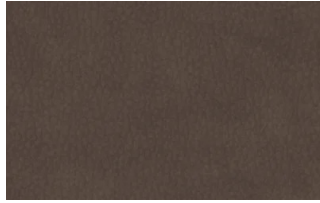
Ecoleathers

EXTRA ECO-LEATHERS

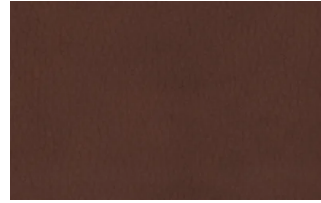
Vintage eco-leather



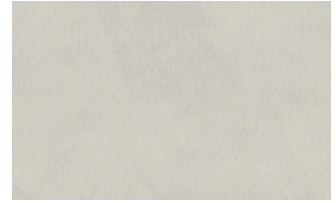
2



3



4



6



7



8



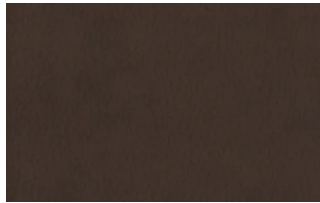
9



14



19



22